

GARAGE EQUIPMENT

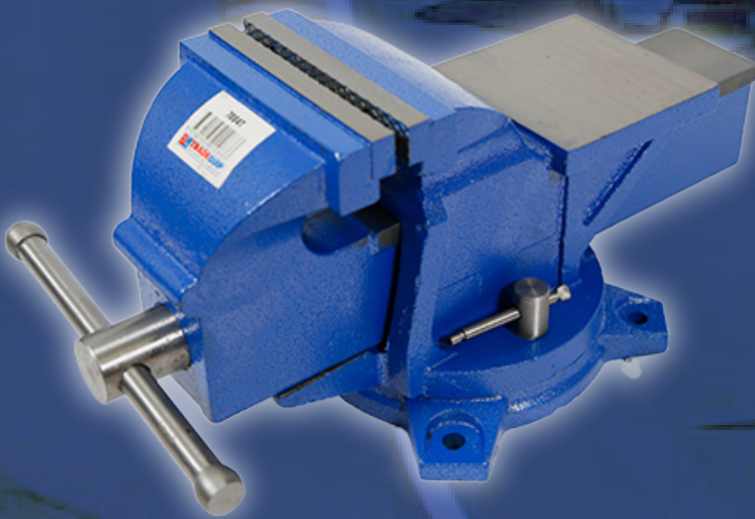
Product Code: **7004T**

SWIVEL BASE

ENGINEERS VICE

150MM JAWS WITH ANVIL

Toughened quality malleable cast iron body with a machined steel screw and handle, this TradeQuip "Made for the Trade" Engineers Bench Vice has forged steel serrated jaws to provide a sure grip and keep your workpiece steady. A large hardened anvil work surface is perfect for shaping and fabrication work. The robust swivel base offers flexibility for efficiency and a large machined centre slide keeps jaws precisely aligned under maximum clamping pressure.



FEATURES

- Body of rugged quality malleable cast iron
- Forge hardened steel serrated jaws
- Precision machined steel screw and handle
- Reinforced mounting lugs
- Swivel base locks in place
- Large hardened anvil work surface incorporated

**MADE FOR THE
TRADE**

SPECIFICATIONS

- Cast Iron
- Jaw Width: 150mm
- Jaw Opening: 170mm
- Throat Depth: 86mm
- Anvil Size: 127x127mm
- Nett Weight: 27kg

