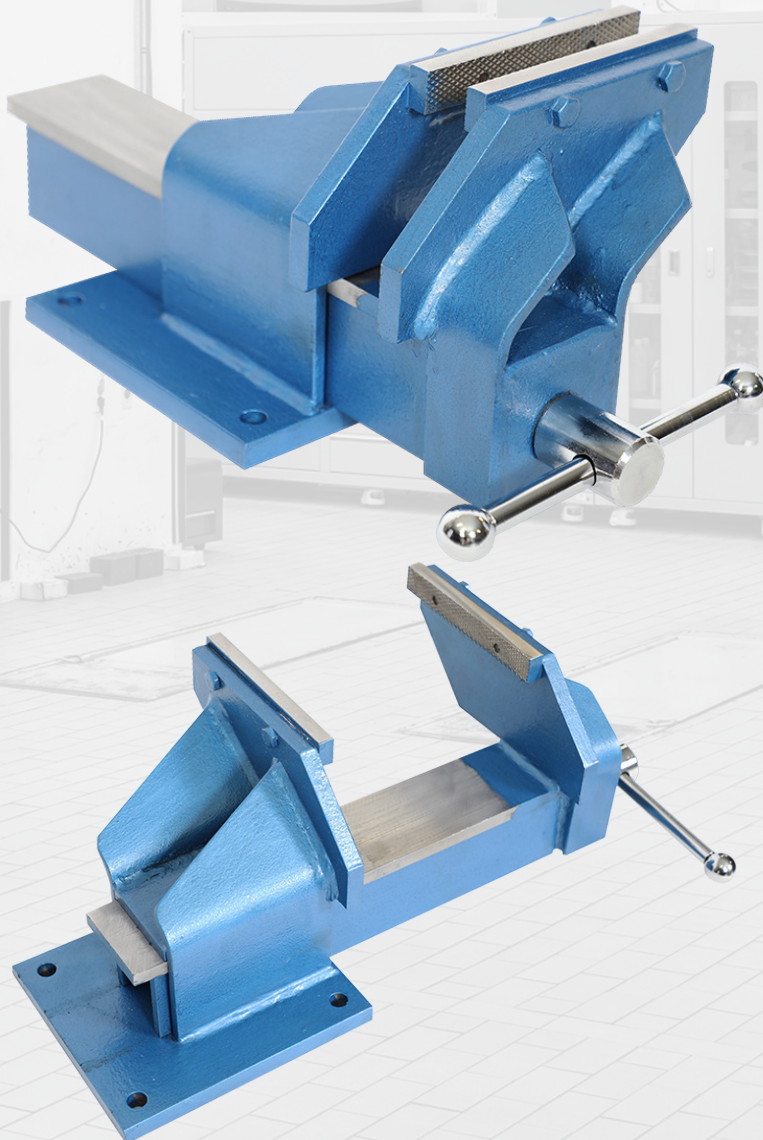


# PRODUCT INFORMATION

## FABRICATED STEEL OFFSET VICE

**Jaw Width 150mm**

This TradeQuip "Made for the Trade" Engineers Vice is designed for all heavy duty work and manufactured from heavy steel plate. Precision machined surfaces ensures a long life smooth operation with case hardened replaceable steel jaws, replaceable nut, corrosion resistant screw and handle. The offset design offers the convenience to hold a long vertical workpiece in the full width of the jaws without obstruction from the main body of the vice. This is an all steel fabricated offset bench vice, manufactured from heavy steel plate and strong welded finish. The surface hardened slides provide a smooth, precise and efficient operation. (Previous models include product code/s; 74160S)



### Features

- Offset jaws allow the workpiece to be held in a vertical position
- Fixed offset base - right hand
- Solid fabricated steel construction
- Precision machined screw and handle
- 4 mounting holes (13mm Dia)

**MADE FOR THE TRADE**

### Specifications

- Jaw Width: 150mm / 6"
- Throat Depth: 103mm
- Overall Width: 245mm
- Overall Height: 194mm
- Maximum Opening: 140mm
- Overall Length: (closed jaw) 475mm
- Nett Weight: 21kg
- Carton: 510 x 295 x 210mm
- Gross Weight: 26kg

[www.tqbbrands.com.au](http://www.tqbbrands.com.au)

PRODUCT CODE: 7007T