

Owners Manual

Product Code: 1993T

**MADE FOR THE
TRADE**

TQ TRADEQUIP
the trusted brand in equipment

AIR HOSE REEL



Specifications:

- Hose I.D.: 8mm (5/16")
- Hose Length: 30m
- Max Air Pressure: 300psi
- Air Inlet: 3/8"- BSP
- Hose Outlet: 1/4"- BSP
- Hose Colour: Black
- Reel Colour: Black
- Carton: 370 x 280 x 340mm
- Weight: 11kg

About the TradeQuip brand

The 'TradeQuip' brand of workshop equipment, is designed for use in a demanding workshop environment by professional users. With proven and trusted "Made for the Trade" reliability, 'TradeQuip' branded products offer the very best in performance for an affordable price. All backed by a 1year trade guarantee across 1,000+ distributors Australia wide.

TQ TRADEQUIP
the trusted brand in equipment

TQpro
Trusted by serious professionals

BORUM
INDUSTRIAL WORKSHOP EQUIPMENT

WARNING

IMPORTANT: READ ALL INSTRUCTIONS BEFORE USE



WARNING

The instructions and warnings contained in this manual should be read and understood before using or operating this equipment. Do not allow anyone to use or operate this equipment until they have read this manual and have developed a thorough understanding of how this equipment works. Failure to observe any of the instructions contained in the manual could result in severe personal injury to the user or bystanders, or cause damage to the equipment and property. Keep this manual in a convenient and safe place for future reference.

Whilst every effort has been made to ensure accuracy of information contained in this manual, the TQB Brands Pty Ltd policy of continuous improvement determines the right to make modifications without prior warning.

CONTENT

WARNING..... 2

CONTENT..... 2

STANDARD OPERATING PROCEDURE 3

ASSEMBLY, OPERATION, PREVENTITIVE MAINTENANCE 4

PARTS DIAGRAM 6

PARTS LIST..... 6

WARRANTY 7

STANDARD OPERATING PROCEDURE

DO NOT use this machine unless you have been trained and assessed to a competent level in its safe use and operation, and have been given permission to use this



Safety glasses must be worn when operating this equipment



Long loose hair must be contained when operating this equipment



Safety footwear must be worn when operating this equipment



Close fitting/protective clothing must be worn when operating this equipment



Rings and jewellery must not be worn when operating this equipment

PRE-OPERATIONAL SAFETY CHECKS

Save these instructions. For your safety, read, understand, and follow the information provided.

- Before using the hose and reel ensure it is in sound condition, and good working order.
 - Replace or repair damaged parts. Use recommended parts only. Non-authorized parts may be dangerous and will invalidate the warranty.
 - Keep the hose reel clean for best and safest performance.
 - Locate the hose reel in an adequate working area for its function, keep area clean and tidy and free from unrelated materials, and ensure there is adequate lighting.
 - Ensure all non-essential persons keep a safe distance whilst the hose reel is in use.
 - Stay alert. Watch what you are doing and use common sense when operating the tool.
 - Do not use the tool while tired or under the influence of drugs, alcohol, or medication.
 - Disconnect the tool from the air source before making any adjustments, changing accessories, or storing the tool.
 - Check for misalignment or binding of moving parts, breakage of parts, and any other condition that affects the tool's operation.
 - DO NOT operate hose reel if damaged.
 - DO NOT allow untrained persons to operate the hose reel.
 - DO NOT use the tool while tired or under the influence of drugs, alcohol, or medication.
 - DO NOT exceed the rated air pressure capacity of 300PSI.
1. The warnings and precautions discussed in this manual cannot cover all possible conditions and situations that may occur. It must be understood by the operator that common sense and caution are factors which cannot be built into this product, but must be supplied by the operator.
 2. Obey the manual for the air tool and air compressor used with this tool.
 3. Install an in-line shutoff valve to allow immediate control over the air supply in an emergency, even if a hose is ruptured.

INTENDED USE

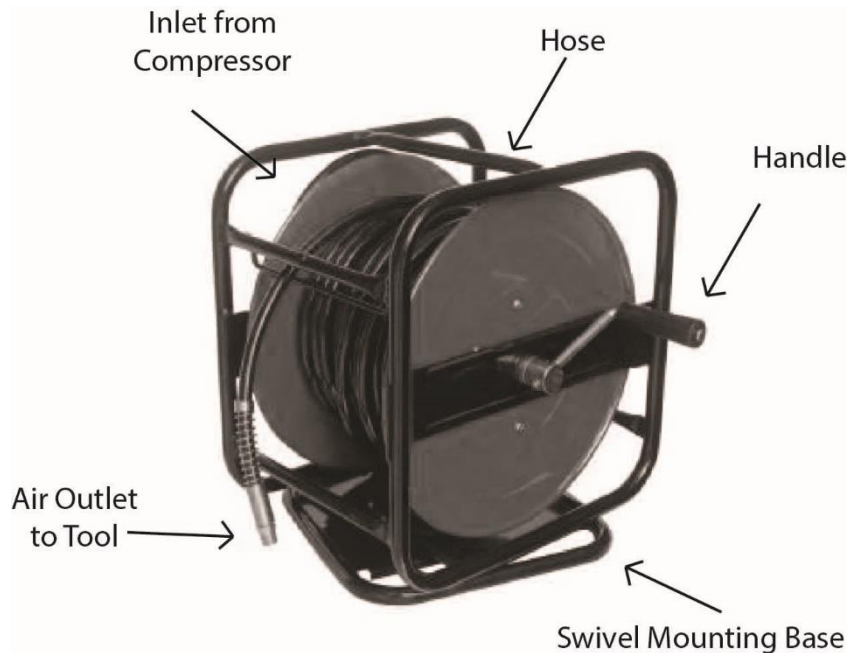
Store in a handy hand cranked reel, the 1993T is used to convey regulated pressurised air to operate pneumatic powered systems in a workshop environment

ASSEMBLY, OPERATION, PREVENTITIVE MAINTENANCE

1. FEATURES

The *Tradequip "Made for the Trade"* Hand Crank Reel is designed to conveniently store long hose lengths. Ideal for industrial or outdoor use, these Hose Reels are engineered to provide trouble-free performance and long product life. This is the perfect addition to any mobile mechanic or workshop to keep all the air hoses clean and tidy. The hose on this reel, with 360 degree swivel base, can be wound quickly by crank. The swivel air connection makes rolling and unrolling under pressure possible.

2. ASSEMBLY



3. BEFORE USE

Prior to each use conduct a visual inspection by checking for abnormal conditions, such as split hose, cracked joints and damaged, loose, or missing parts.

1. Choose a mounting location that is free obstructions and is sturdy enough to support the weight of the Reel and Hose as well as the force used to extend and rewind it.
2. Make a paper template from the mounting plate of the Reel if the hose reel is to permanently mounted in one location. Mark the centre of the bolt holes in the desired mounting location
3. Check for hidden wiring, then, drill holes to accommodate the bolts.

General Operating Instructions

1. Attach a coupler (sold separately) to your air compressor hose and apply thread seal tape to the Inlet fitting on the Reel.
2. Connect the coupler to the Inlet fitting.
3. Connect your air tool to the other end of the Hose using another coupler and thread seal tape.
4. Follow all instructions from the air tool and compressor for set up and use.
5. When finished using the Hose, disconnect the air tool and wind in the hose.
6. Wipe the Hose Reel clean with a dry cloth.

4. STORAGE

This Air Hose Reel should always be stored in the fully retracted position and be mounted in an indoor or dry location on a flat and level surface.

5. MAINTENANCE

NOTE: These procedures are in addition to the regular checks and maintenance explained as part of the regular operation of the Hose Reel.

BEFORE EACH USE, inspect the general condition of the Hose Reel. Check for:

- ✓ loose hardware or housing,
- ✓ misalignment or binding of moving parts,
- ✓ cracked or broken parts, and
- ✓ any other condition that may affect its safe operation.

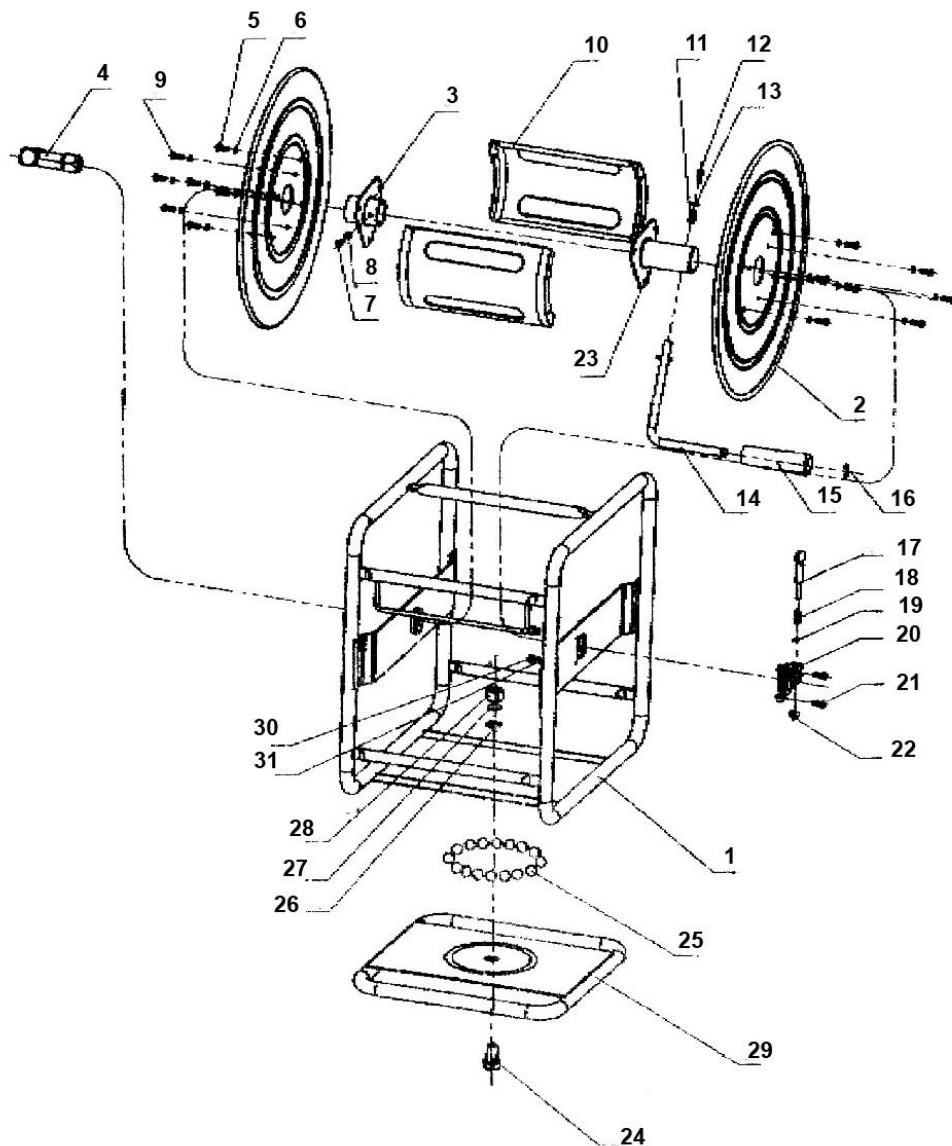
AFTER EACH USE, re-wind the hose onto the reel and wipe the Hose Reel clean with a dry cloth. Always keep the Hose Reel clean for best and safest performance.

Replace or repair damaged parts. Use recommended parts only. Non-authorized parts may be dangerous and will invalidate the warranty.

6. SERVICE & REPAIR

Any Hose Reel found damaged in any way, or found to be worn or operates abnormally should be removed from service until repaired by an authorised service agent. Owners and / or operators should be aware that repair of this product may require specialised equipment and knowledge. Only authorised parts, labels and decals shall be used on this equipment. Annual inspection of the engine stand is recommended and can be made by an authorised repair facility to ensure that your equipment is in optimum condition and that the equipment has the correct decals and safety labels specified by the manufacturer.

PARTS DIAGRAM



PARTS LIST

Part	Description	Qty	Part	Description	Qty
1	Frame Assembly	1	17	Lock Pin	1
2	Flange	2	18	Spring	1
3	Bearing Assembly	1	19	Washer	1
4	Swivel Sub Assembly	1	20	Lock Sleeve	1
5	Screw	8	21	Bolt	2
6	Spring Washer	14	22	Screw	1
7	Screw	1	23	Support Axle	1
8	Spring Washer	1	24	Bolt	1
9	Screw	6	25	Steel Ball	31
10	Reel Core Assembly	2	26	Washer	1
11	Spring	1	27	Spring Washer	1
12	Screw	1	28	Nut	1
13	Washer	1	29	Washer	1
14	Handle Axle	1	30	Base Assembly	1
15	Handle	1	31	Spring Washer	1
16	'E' Clip	1			

WARRANTY

Tradequip products have been carefully tested and inspected before shipment and are guaranteed to be free from defective materials and workmanship for a period of 12 months from the date of purchase except where tools are hired out when the guarantee period is ninety days from the date of purchase.

Should the machine develop any fault, please return the complete tool to your nearest authorised warranty repair agent or contact TQB Brands Pty Ltd Warranty team – warranty@tqbbrands.com.au.

If upon inspection it is found that the fault occurring is due to defective materials or workmanship, repairs will be carried out free of charge. This guarantee does not apply to normal wear and tear, nor does it cover any damage caused by misuse, careless or unsafe handling, alterations, accident, or repairs attempted or made by any personnel other than the authorised TQB Brands Pty Ltd repair agent.

This guarantee applies in lieu of any other guarantee expressed or implied and variations of its terms are not authorised.

Your TQB Brands Pty Ltd guarantee is not effective unless you can produce upon request a dated receipt or invoice to verify your proof of purchase within the 12month period.

Consumer Guarantee

Our goods come with a guarantee that cannot be excluded under the Australian Consumer Law. You are entitled to a replacement or refund for a major failure and compensation for any other reasonably foreseeable loss or damage. You are also entitled to have the goods repaired or replaced if the goods fail to be of acceptable quality and the failure does not amount to a major failure.



All images and illustrations shown are for reference purposes only. All information, specifications and illustrations in this manual are based on the latest information available at the time of publication and are subject to change without notice. The information in this manual is periodically revised to ensure the latest information is included. Download the latest version of this manual and other related technical documentation from www.tqbbrands.com.au