

Owners Manual

Product Code: 2026T

**MADE FOR THE
TRADE**

TQ TRADEQUIP
the trusted brand in equipment

**HYDRAULIC
BOTTLE JACK**



Specifications:

- Safe Working Capacity: 20,000kg
- Minimum Height: 265mm
- Maximum Height: 510mm
- Hydraulic Lift: 170mm (265mm to 435mm)
- Adjustable Height: 75mm (maximum height 510mm)
- Base Area: 224x134mm
- Work Pressure: 90-120psi
- Carton: 290 x 200 x 290mm
- Weight: 16kg

About the TradeQuip brand

The 'TradeQuip' brand of workshop equipment, is designed for use in a demanding workshop environment by professional users. With proven and trusted "Made for the Trade" reliability, 'TradeQuip' branded products offer the very best in performance for an affordable price. All backed by a 1year trade guarantee across 1,000+ distributors Australia wide.

TQ TRADEQUIP
the trusted brand in equipment

TQPRO
Trusted by serious professionals

BORUM
INDUSTRIAL WORKSHOP EQUIPMENT

WARNING INFORMATION

IMPORTANT: READ ALL INSTRUCTIONS BEFORE USE



The instructions and warnings contained in this manual should be read and understood before using or operating this equipment. Do not allow anyone to use or operate this equipment until they have read this manual and have developed a thorough understanding of how this equipment works. Failure to observe any of the instructions contained in the manual could result in severe personal injury to the user or bystanders, or cause damage to the equipment and property. Keep this manual in a convenient and safe place for future reference.

Whilst every effort has been made to ensure accuracy of information contained in this manual, the TradeQuip policy of continuous improvement determines the right to make modifications without prior warning.

CONTENT

WARNING INFORMATION 2

CONTENT 2

ASSEMBLY, OPERATION & PREVENTATIVE MAINTENANCE 5

PARTS LIST 8

TROUBLESHOOTING 9

WARRANTY 9

Do not force the product. Products are safer and do a better job when used in the manner for which they are designed. Plan your work, and use the correct product for the job.

Be aware of dynamic loading. A sudden loading movement may briefly create an excess load causing product failure.

PRODUCT INFORMATION

How to extend the life of your Bottle Jacks

8 Top Tips

to extend the life of your TQB BRANDS Manual & Air/Manual Bottle Jacks

1 Ensure Hydraulic oil is at correct levels.

Follow individual model owner's manual instructions for maintenance in your owner's manual provided and also available on our webpage at www.tqbbrands.com.au



Remove Filter Plug and refill with SAE 32 grade Hydraulic Oil to the level indicated.

2 Regularly lubricate the Air motor and Manual Pump Pivots.

Lubrication of the air motor and manual pump pivots, pins, is essential for smooth operation while raising a vehicle.

10ml SAE 32 grade Oil or Air Tool Lubricant.



Lubricate Pivots and Pins with 30/40W Machine Oil.

3 Always store in the fully lowered position.

Storage in the lowered position ensures the lift ram assembly and pump piston is sealed from exposure to weather fluctuations and keeps the hydraulic ram and pump seals in a relaxed condition ready to work when required.



4 Never use bottle jack for supporting loads.

To ensure long life of the hydraulic lift ram seals, a load must not be supported above the fully lowered position. Once a vehicle is raised it must be supported with a load appropriate vehicle stand with the jack lowered and not supporting load.



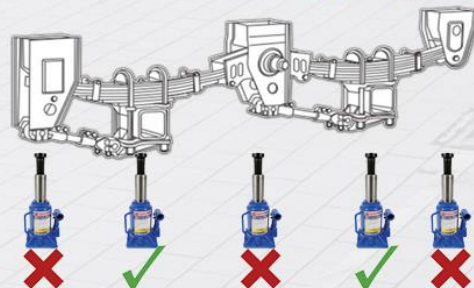
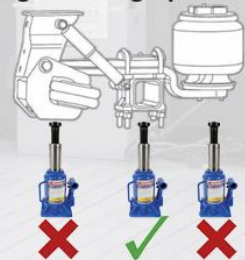
5 Use the available screw extension or solid extension inserts where applicable.

Single piston and multi piston telescopic jacks have their greatest stability from the fully lowered height to 85% of total extended height. Where the lowered height of the jack is lower than the load points height from the ground the extension screws and or solid extension inserts should always be used to close the clearance between jack and load point, this also greatly reduces the potential of lateral force.



6 Off centre loading or unbalanced loads can affect the smooth lowering & raising operation.

Always consult your vehicle manufacturer specifications for the correct lift point. Never lift from a suspension pivot or air bag mount plate where these items are designed to travel in an arc causing excess lateral force to the jack throughout its lift cycle.



7 Read the user Manual thoroughly and keep a copy easily accessible.

8 Visit our webpage www.tqbbrands.com.au for instructional & pre-start video.



STANDARD OPERATING PROCEDURE

DO NOT use this machine unless you have been trained and assessed to a competent level in its safe use and operation, and have been given permission to use this



Safety glasses must be worn when operating this equipment



Long loose hair must be contained when operating this equipment



Safety footwear must be worn when operating this equipment



Close fitting/protective clothing must be worn when operating this equipment



Rings and jewellery must not be worn when operating this equipment

Do not force the product. Products are safer and do a better job when used in the manner for which they are designed. Plan your work, and use the correct product for the job.

Be aware of dynamic loading. A sudden loading movement may briefly create an excess load causing product failure.

PRE-OPERATIONAL SAFETY CHECKS


- Check vehicle owner's manual for correct vehicle weight - DO NOT exceed the bottle jacks rated safe working capacity.
- Use only as specified by the manufacturer.
- The bottle jack is a lifting and lowering device only. Immediately after lifting, support the vehicle with appropriate means.
- Use only on a hard, level surface.
- Securely chock wheels remaining on the ground.
- Ensure that each stand is securely located under a strong point on the vehicle - consult vehicles owner's manual for guidance.
- Centre the load prior to lifting.
- For your safety, do not modify or alter this bottle jack.
- When servicing, use only TradeQuip identical replacement parts. Use of any other parts will void the warranty.
- Use the right product for the job. There are certain applications for which the bottle jack was designed. Do not modify the bottle jack and do not use the bottle jack for a purpose for which it was not intended.

POTENTIAL HAZARDS


- DO NOT exceed the bottle jacks rated safe working capacity.
- DO NOT modify this jack.
- DO NOT over extend the jack. Always ensure you have enough ram travel for lifting required
- DO NOT use aid to raise the minimum or maximum height of the jack ie blocks

INTENDED USE

For heavy duty truck, agriculture, construction, mining, mobile home, oil field, automotive, and marine applications where lifting is required.



WARNING



ENSURE WHEELS ARE CHOCKED BEFORE LIFTING. ENSURE JACK IS USED ON A HARD LEVEL SURFACE THAT CAN HOLD THE WEIGHT. ENSURE THE LOAD IS CENTRALLY LOCATED ON THE HEAD CAP. CONSULT THE VEHICLE MANUFACTURER OWNERS MANUAL PRIOR TO LIFTING THE VEHICLE TO ENSURE THE CORRECT LIFT POINT SPECIFIED BY THE VEHICLE MANUFACTURER IS USED. THIS IS A LIFTING AND LOWERING DEVICE ONLY AND IS DESIGNED FOR LIFTING PART OF THE TOTAL VEHICLE. DO NOT MOVE OR DOLLY THE VEHICLE WHILST THE VEHICLE IS ON THE JACK.

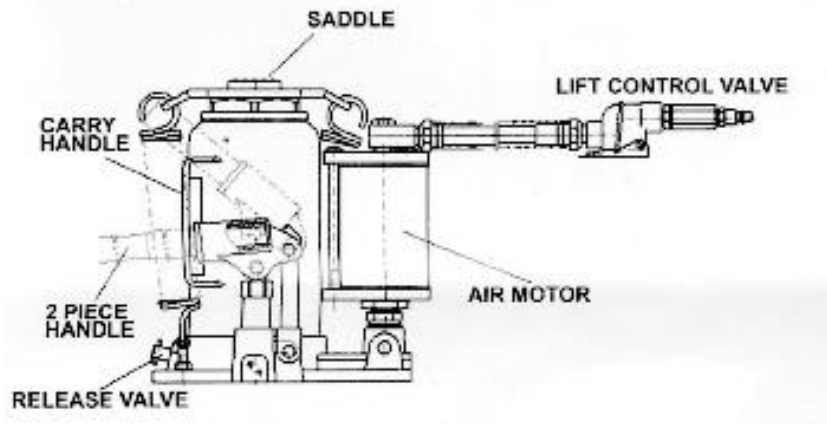
ASSEMBLY, OPERATION & PREVENTATIVE MAINTENANCE

1. FEATURES

The TradeQuip air actuated hydraulic bottle jack is designed to operate either manually or pneumatically for lifting and lowering, but not sustaining load. This 20,000kg heavy-duty air/hydraulic bottle jack is the perfect choice for a wide variety of uses. The power of air makes it easy to lift farm vehicles, trucks, lawn mowers, heavy equipment and other large loads. The manual function allows for normal operation anywhere, even without an air supply.

2. BEFORE USE

Conduct a thorough visual inspection checking for any abnormal conditions, such as cracked welds, and damaged, loose, or missing parts.



1. Verify that the product and the application are compatible.
2. Pour a teaspoon of good quality air tool lubricant into the air supply inlet of the lift control valve. Connect to air supply and operate for 3 seconds to evenly distribute lubricant.
3. Check to ensure that the pump operates smoothly before putting into service. Replace worn or damaged parts and assemblies with manufacturer approved parts only.
4. This product is fitted with a standard 1/4" NPT air fitting. To change the fitting install a 1/4" NPT fitting of your choice, ensure the thread tape or compound is used to seal the connection.

3. OPERATION

Prior to each use always conduct a visual inspection checking for and any abnormal conditions, such as cracked welds, and damaged, loose, or missing parts.

Raising the Jack:

1. Block the vehicle's wheels for lifting stability. Secure the load to prevent inadvertent shifting and movement.
2. Position the jack near desired lift point.
3. Set the parking brake in the vehicle.
4. Refer to the vehicle manufacturer owner's manual to locate approved lifting points on the vehicle. Position the jack so the saddle is centred and will contact the load lifting point firmly
5. Assemble the handle; ensure that spring clips align with slots.
6. Close the release valve by turning it clockwise until it is firmly closed.
7. Insert and secure the handle into handle sleeve. Pump handle or squeeze the lift control valve until the saddle contacts load. To end air operation simply release the grip on the lift control valve.
8. Raise load to the height required to safely position jack stands and then immediately transfer the load to appropriately rated jack stands under the part of the load approved by the manufacturer.

WARNING

Never wire, clamp or otherwise disable the lift control valve to function by any means other than by using the operator's hand. Use the handle provided with this product or an authorised replacement handle to ensure proper release valve operation. Do not use extensions on the air hose or on the operating handle.

To Lower Vehicle:

1. Raise load high enough to allow clearance for the jack stands to be removed, then carefully remove jack stands.
2. Insert handle release valve and slowly turn handle counter clockwise, no more than 1/2 a turn.
3. Grasp the handle firmly with both hands. Securely hold on to the jack handle so your hands do not slip and ensure the load does not rapidly lower.

- (Do not allow bystanders around the jack or under the load when lowering the jack).

4. MAINTENANCE

If you use and maintain your equipment properly, it will give you many years of service. Follow the maintenance instructions carefully to keep your equipment in good working condition. Never perform any maintenance on the equipment while it is under a load.

Inspection: Inspect the product for damage, wear, broken or missing parts (eg: pins) and that all components function before each use. Follow lubrication and storage instructions for optimum product performance. Ensure all moving parts are clear of dirt and debris.

Cleaning: If the moving parts of the equipment are obstructed, use cleaning solvent or another good degreaser to clean the equipment. Remove any existing rust, with a penetrating lubricant.

Lubrication: This equipment will not operate safely without proper lubrication. Using the equipment without proper lubrication will result in poor performance and damage to the equipment. A coating of light lubricating oil to pivot points, axles and hinges will help to prevent rust. Periodically check the pump piston and ram for signs of rust or corrosion. Clean as needed and wipe with an oily cloth.

NEVER USE SANDPAPER OR ABRASIVE MATERIAL ON THESE SURFACES.

To Add Jack Oil:

NEVER USE BRAKE FLUID, TURBINE OIL, TRANSMISSION FLUID, MOTOR OIL OR GLYCERIN. IMPROPER FLUID WILL CAUSE PREMATURE FAILURE OF THE JACK AND THE POTENTIAL FOR SUDDEN OR IMMEDIATE LOSS OF LOAD

- With saddle fully lowered and pump piston fully depressed, set jack in its upright level position.
- Remove oil filler plug.
- Fill until oil is level with the filler plug hole, reinstall oil filler plug.

Replace Jack Oil:

For best performance and longest life, replace the complete fluid supply at least once per year.

- With the saddle fully lowered and pump piston fully depressed, remove the oil filler plug.
- Lay jack on its side and drain the fluid into a suitable container.
- Fill the oil case until oil level is just beneath the lower rim. KEEP DIRT AND OTHER MATERIAL CLEAR WHEN POURING.
- Replace oil plug.
- Perform air purge procedure.

The usual symptoms of an Air Hydraulic/Manual Bottle Jack with air in the system are as follows:

- No resistance in the Manual Pump stroke whilst raising a load [handle feels light].
- Partial down stroke of the Manual Pump has resistance and little movement of the Lift Ram.
- Air Motor Pump runs but no movement in the Lift Ram.
- Lift Ram jumps upwards while being pumped up. (Non-spring versions only).
- Lift Ram slowly raises on its own after being fully retracted. (Non-spring versions only).

Bleeding Instructions for Manual Pump:

- Remove the Filler Bung and if required, refill with *32 Grade Hydraulic oil until the oil is lapping the bottom of the filler hole then replace the Filler Bung.
- Start with the Pump Lever Assembly in the horizontal position.
- Turn the Release Valve clockwise to the lifting position.
- Pull the Pump Lever upwards to the raised position.
- Invert the jack and push the Pump Lever back to the horizontal position.
- Place the Jack on its base.
- Repeat steps 4 to 6 until the Pump Lever feels firm and the Lift Ram is extending.
- At this point the Pump Assembly should be bled of air. Follow steps 9 to 10 to purge the Lift Ram
- Make sure the Release Valve is still in raise mode and pump the Lift Ram to full extension.
- Turn the Release Valve to the lowering position and invert the Jack. Apply force to the bottom the Jack forcing the Lift Ram back to fully retracted position.
- Both the Manual Pump & Lift Ram should be free of air and the Jack ready for Air Motor bleeding.



of

Bleeding Instructions for Air Motor Pump:

1. Remove the Filler Bung and if required, refill with *32 Grade Hydraulic oil until the oil is lapping the bottom of the filler hole.
2. Leave the Filler Bung out and turn the Release valve to the lift position.
3. Use the Manual Pump to raise the Lift Ram to approximately half its stroke.
4. Replace the Filler Bung and turn the release valve anticlockwise to the lowering position.
5. Depress the Lift Ram back to the lowered position.
6. Turn the release valve clockwise to the raise position.
7. Connect an air supply to the Air Trigger assembly and depress holding down until the Lift Ram has extended approximately half way.
8. Remove the Filler Bung, Turn the release valve to lowering position and depress the Lift Ram lowered position.
9. Replace the Filler Bung and turn the release valve to the raise position.
10. Connect an air supply to the Air Trigger assembly and depress holding down until the Lift Ram has extended to full stroke then continue to hold the trigger down for 10 seconds.
11. Turn the release valve to lowering position and lower the Lift ram to lowered position.



At this point the Manual Pump, Air Motor Pump and Lift Ram should be free of air and the Jack ready for Operation. If the jack continues to show the Symptoms as above, please refer to a Qualified Hydraulic Technician.

The range of TQB Brands Bottle Jacks use 32 Grade Hydraulic Oil for the correct operation and compatibility with the seals used in their construction.

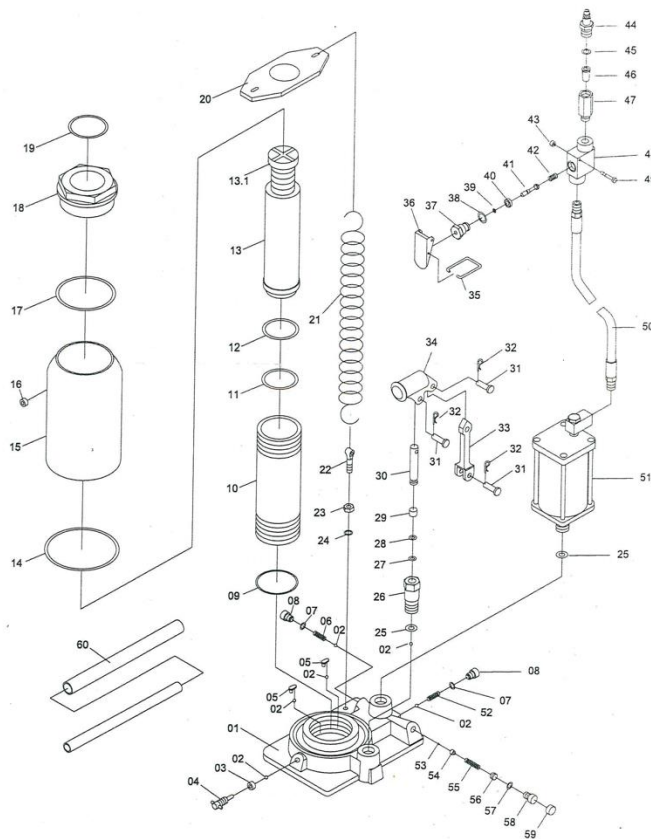


Scan the QR code for video of procedure mentioned above

5. SERVICE & REPAIR

Any Bottle Jack found damaged in any way, or found to be worn or operates abnormally should be removed from service until repaired by an authorised service agent. Owners and / or operators should be aware that repair of this product may require specialised equipment and knowledge. Only authorised parts, labels, decals shall be used on this equipment. Annual inspection of the Bottle Jacks is recommended and can be made by an authorised repair facility to ensure that your equipment is in optimum condition and that the equipment has the correct decals and safety labels specified by the manufacturer.

PARTS LIST



| Part # | Description | QTY |
|--------|---------------|-----|
| 1 | Base | 1 |
| 2 | Ball 1/4" | 6 |
| 3 | Seal | 1 |
| 4 | Release Valve | 1 |
| 5 | Ball Cup | 2 |
| 6 | Spring | 1 |
| 7 | Nylon Ring | 2 |
| 8 | Screw | 2 |
| 9 | Nylon Ring | 1 |
| 10 | Cylinder | 1 |
| 11 | O-Ring | 1 |
| 12 | Cup Seal | 1 |
| 13 | Ram | 1 |
| 14 | Packing | 1 |
| 15 | Reservoir | 1 |
| 16 | Filler Plug | 1 |
| 17 | Nylon Ring | 1 |
| 18 | Top Nut | 1 |
| 19 | O-Ring | 1 |
| 20 | Spring Plate | 1 |
| 21 | Spring | 2 |
| 22 | Eye Bolt | 2 |
| 23 | Nut | 2 |
| 24 | Lock Washer | 2 |
| 25 | Washer | 1 |
| 26 | Pump Cylinder | 1 |
| 27 | O-Ring | 1 |
| 28 | Nylon Ring | 1 |
| 29 | Back-up Ring | 1 |
| 30 | Piston | 1 |

| Part # | Description | QTY |
|--------|----------------|-----|
| 31 | Pin | 3 |
| 32 | R-Pin | 3 |
| 33 | Connector | 1 |
| 34 | Handle Bracket | 1 |
| 35 | Lock Lever | 2 |
| 36 | Lever | 1 |
| 37 | Nut | 1 |
| 38 | O-Ring | 1 |
| 39 | O-Ring | 1 |
| 40 | Packing | 1 |
| 41 | Throttle | 1 |
| 42 | Spring | 1 |
| 43 | Nut | 1 |
| 44 | Hose Connector | 1 |
| 45 | O-Ring | 1 |
| 46 | Air Filter | 1 |
| 47 | Screw | 1 |
| 48 | Valve Body | 1 |
| 49 | Screw | 1 |
| 50 | Air Hose | 1 |
| 51 | Air Motor | 1 |
| 52 | Air Hose | 1 |
| 53 | Ball | 1 |
| 54 | Ball Cup | 1 |
| 55 | Spring | 1 |
| 56 | Screw | 1 |
| 57 | O-Ring | 1 |
| 58 | Screw | 1 |
| 59 | Plastic Cap | 1 |
| 60 | Handle | 2 |

TROUBLESHOOTING

| Problem | Cause | Solution |
|-------------------------------------|--|---|
| Jack will not lift | Release valve not tightly closed Overload condition Air supply inadequate | Ensure release valve tightly closed Remedy overload condition Ensure adequate air supply |
| Jack bleeds off after lift | Release valve not tightly closed Overload condition Hydraulic unit malfunction | Ensure release valve tightly closed Remedy overload condition Contact place of purchase |
| Jack will not lower after unloading | Reservoir overfilled Linkages binding | Drain fluid to proper level Clean and lubricate moving parts |
| Poor lift performance | Fluid level low Air trapped in system | Drain fluid to fluid level With ram fully retracted, remove oil filler plug to let pressurised air escape reinstall oil filler plug |
| Will not lift to full extension | Fluid level low | Ensure proper fluid level |

WARRANTY

TradeQuip products have been carefully tested and inspected before shipment and are guaranteed to be free from defective materials and workmanship for a period of 12 months from the date of purchase except where tools are hired out when the guarantee period is ninety days from the date of purchase.

Should the machine develop any fault, please return the complete tool to your nearest authorised warranty repair agent or contact TQB Brands Pty Ltd Warranty team – warranty@tqbbrands.com.au.

If upon inspection it is found that the fault occurring is due to defective materials or workmanship, repairs will be carried out free of charge. This guarantee does not apply to normal wear and tear, nor does it cover any damage caused by misuse, careless or unsafe handling, alterations, accident, or repairs attempted or made by any personnel other than the authorised TQB Brands Pty Ltd repair agent.

This guarantee applies in lieu of any other guarantee expressed or implied and variations of its terms are not authorised.

Your TQB Brands Pty Ltd guarantee is not effective unless you can produce upon request a dated receipt or invoice to verify your proof of purchase within the 12 month period.

Consumer Guarantee

Our goods come with a guarantee that cannot be excluded under the Australian Consumer Law. You are entitled to a replacement or refund for a major failure and compensation for any other reasonably foreseeable loss or damage. You are also entitled to have the goods repaired or replaced if the goods fail to be of acceptable quality and the failure does not amount to a major failure.



All images and illustrations shown are for reference purposes only. All information, specifications and illustrations in this manual are based on the latest information available at the time of publication and are subject to change without notice. The information in this manual is periodically revised to ensure the latest information is included. Download the latest version of this manual and other related technical documentation from www.tqbbrands.com.au.