

Owners Manual

Product Code: 2057T

**MADE FOR THE
TRADE**

TQ TRADEQUIP
the trusted brand in equipment

**TRANSMISSION
LIFTER**



Specifications

- Safe Working Capacity: RWD/FWD/AWD/4X4 GVM <3,500kg
- Rated Capacity: 1,000kg
- Maximum Height: 725mm
- Minimum Height: 205mm
- Cradle Size: 340x200mm
- Cradle Tilt Forward: 70°
- Cradle Tilt Back: 15°
- Cradle Lateral Adjustment: 90mm
- Chassis: 850(L)x490(W)x305(H)mm
- Nett Weight: 54kg
- Carton 910 x 520 x 260mm
- Gross Weight: 59.5kg



About the Tradequip brand

The 'Tradequip' brand of workshop equipment, is designed for use in a demanding workshop environment by professional users. With proven and trusted "Made for the Trade" reliability, 'Tradequip' branded products offer the very best in performance for an affordable price. All backed by a 1year trade guarantee across 1,000+ distributors Australia

TQ TRADEQUIP
the trusted brand in equipment

TQPRO
Trusted by various professionals

BORUM
INDUSTRIAL WORKSHOP EQUIPMENT

WARNING

IMPORTANT: READ ALL INSTRUCTIONS BEFORE USE



WARNING

The instructions and warnings contained in this manual should be read and understood before using or operating this equipment. Do not allow anyone to use or operate this equipment until they have read this manual and have developed a thorough understanding of how this equipment works. Failure to observe any of the instructions contained in the manual could result in severe personal injury to the user or bystanders, or cause damage to the equipment and property. Keep this manual in a convenient and safe place for future reference.

Whilst every effort has been made to ensure accuracy of information contained in this manual, the TQB Brands Pty Ltd policy of continuous improvement determines the right to make modifications without prior warning.

CONTENT

WARNING 2

CONTENT 2

STANDARD OPERATING PROCEDURE 3

ASSEMBLY, OPERATION, PREVENTITIVE MAINTENANCE..... 4

PARTS DIAGRAM..... 6

PARTS LIST 7

TROUBLESHOOTING 8

PRODUCT INFORMATION TIPS 9

WARRANTY 10



USE THIS PRODUCT FOR ITS INTENDED PURPOSE ONLY

INTENDED USE

Designed for the removal, installation, and transportation (in the lowered position) of passenger vehicle transmissions that are raised by an in-ground or above-ground lift

STANDARD OPERATING PROCEDURE

DO NOT use this machine unless you have been trained and assessed to a competent level in its safe use and operation, and have been given permission to use this



Safety glasses must be worn when operating this equipment



Long loose hair must be contained when operating this equipment



Safety footwear must be worn when operating this equipment



Close fitting/protective clothing must be worn when operating this equipment



Rings and jewellery must not be worn when operating this equipment

PRE-OPERATIONAL SAFETY CHECKS

Save these instructions. For your safety, read, understand, and follow the information provided with and on this **1,000kg Transmission Lifter** before using.

- DO NOT exceed the maximum lifting load capacity of 1000kg.
- Only use this Transmission Lifter on a surface that is stable, level, smooth, dry and capable of sustaining the load. Keep the surface free from unrelated materials and ensure that there is adequate lighting.
- DO NOT use on tarmac, or any other soft surface as the transmission may sink or topple.
- Vehicle must be properly and adequately supported before commencing work with this Transmission Lifter.
- This Transmission Lifter is used as an aid in the removal and installation of a transmission or a differential, as individual components. DO NOT use it for any other purpose than it is designed for.
- Always centre the load on the cradle of this Transmission Lifter and be sure the transmission is stable and secure before raising or lowering.
- DO NOT use the Transmission Lifter to lift or support a heavy load such as a differential with axle or a transmission with bell housing which is bulky and difficult to balance, and may cause the transmission lifter to tip over and lead to equipment damage and/or serious personal injury.
- Never move this Transmission Lifter with a load any higher off the ground than necessary and always move it slowly and carefully.
- Transfer the load immediately to appropriate support device for service or repair.
- DO NOT operate this Transmission Lifter when you are tired or under the influence of alcohol, drugs or any intoxicating medication.
- DO NOT allow untrained persons to operate this product and DO NOT make any modifications to this product.
- DO NOT tamper with the safety valve.
- DO NOT expose the Transmission Lifter to rain or any other kind of inclement weather.
- When servicing, use only TradeQuip identical replacement parts. Use of any other parts will void the warranty.
- Use the right product for the job. There are certain applications for which this Transmission Lifter was designed. Do not modify the Transmission Lifter and do not use the Transmission Lifter for a purpose for which it was not intended.



Warning: Vehicle must be properly and adequately supported before commencing work with this Transmission Jack.

INTENDED USE

Designed for the removal, installation and transportation (in the lowered position) of passenger vehicle transmissions that are raised by an in-ground or above-ground lift.

ASSEMBLY, OPERATION, PREVENTITIVE MAINTENANCE

1. FEATURES

This **TradeQuip "Made for the Trade"** 1,000kg Hydraulic Low Profile Transmission Lifter is perfect for transmission installation and removal. Features smooth, manually operated hydraulic lifting and lowering and a 360° rotating handle for better load positioning. The universal mounting cradle provides a wide forward, backward and side to side tilt range. This Transmission Lifter makes transmission removal and replacement easy and safe. Featuring four quality swivel castors for mobility, this tough Transmission Lifter is also formed and welded with extra strong steel plates for ultimate durability.

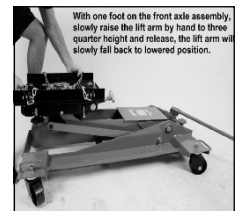
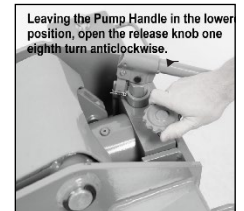
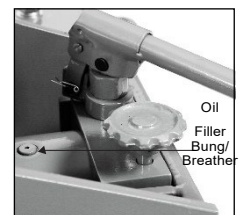
2. BEFORE USE

Prior to each use conduct a visual inspection by checking for abnormal conditions, such as cracked joints and damaged, loose, or missing parts.

Purge the hydraulic system to eliminate any air in the system.

Bleeding Instructions:

1. Remove the Filler Bung and if required, refill with *32 Grade Hydraulic until the oil is approximately 6mm below the filler hole then replace the Filler Bung.
2. Leaving the Pump Handle in the lowered position, open the release knob one eighth turn anticlockwise.
3. With one foot on the front axle assembly, slowly raise the lift arm by hand to three quarter height and release, the lift arm will slowly fall back to lowered position.
4. Remove the oil filler bung from the top of the hydraulic ram and turn the release valve anticlockwise to open.
5. Replace the filler bung and pump the handle up and down quickly several times to bleed air from the pump system.
6. Recheck the hydraulic oil level and refill to 6mm below the fill port if required before replacing the filler bung.
7. If necessary, repeat the process steps 2 to 6



At this point both the Pump and Lift Ram should be free of air and the Jack ready for operation

If the pump still feels spongy or load is slow to raise, seek the services of a qualified Hydraulic repairer.

3. OPERATION

**Warning:**

Vehicle must be properly and adequately supported before commencing work with this transmission lifter.

Removing a Transmission

1. Before each use check the hydraulic oil level and fill to 6mm below the fill port.
2. Once the vehicle is raised and secured on Jack Stands, clear the area underneath the vehicle.
3. Disconnect one end of the chain and allow it to hang free.
4. Move the Transmission Lifter underneath the transmission.
5. Close the release valve.
6. Pump the handle to raise the transmission lifter.
7. Stop just below the transmission and align the saddle to the transmission with the tilt knobs.
8. Continue raising the saddle up to the transmission to determine where you will need to adjust the supports. All four supports need to grip and make contact with the transmission.
9. After determining where they need to be set, loosen the threaded bolts on each support, and adjust it to the proper setting for the transmission. Tighten the bolts.
10. Raise the unit again to make contact with the transmission, making sure all of the supports are in firm contact.
11. Wrap the chain securely around the transmission, and hook the chain to the bracket on the other side of the saddle.
12. Once it is securely fastened, release the bolts holding the transmission in place.
13. Make sure the area is clear of people and tools, and check the transmission is securely held in place.
14. Slowly open the release valve to lower the Transmission Lifter.
15. Move the Transmission Lifter from under the vehicle and perform the necessary maintenance.

Re-installing a Transmission

1. Move the Transmission Lifter so that the transmission is lined up properly with its connection points.
2. Close the release valve.
3. Pump the handle to gradually raise the Transmission Lifter, whilst guiding the transmission into place.
4. Secure the transmission into place using its hardware.
5. Ensure the transmission is securely installed.
6. Disconnect one end of the chain and allow it to hang free.
7. Clear the area near the Transmission Lifter, and slowly open the release valve to lower the lifter.
8. Move the Transmission Lifter clear of the vehicle.

4. STORAGE

This Transmission Lifter should always be stored with the lift arm fully lowered in a dry location on a level surface.

5. MAINTENANCE

Replace or repair damaged parts. Use recommended TradeQuip parts only. Non- authorised parts may be dangerous and will invalidate the warranty. Periodic maintenance is essential for the efficient operation of Manual Transmission lifts. Lack of lubrication can cause severe wear and or premature failure.

Changing the Hydraulic Oil

1. Change the hydraulic jack oil at least once a year.
2. Fully lower the Transmission Lifter, remove the oil fill plug on the side of the hydraulic ram.
3. Tip the Transmission Lifter to allow the old hydraulic oil to drain out of the housing completely, dispose of the old hydraulic oil in accordance with local regulations.
4. With the Transmission Lifter upright, completely fill the hydraulic ram with a high quality hydraulic oil (not included) until the oil just begins to run out of the oil fill hole.
5. Open the release valve and pump the handle to bleed air from the system by following the Bleed Instructions on Page4
6. Reinstall the oil filler plug.
7. Clean with a clean cloth using a mild detergent.
8. Always store the transmission lifter in a safe, dry location.

Lubrication Instructions

1. All lower lift arm pivots and pins in all linkages should be lubricated with a Light Bearing Grease or 30/40W Machine Oil to ensure long life and prevent premature wear.
2. Wheels and Castor axles and bearing races should be lubricated with a Light Bearing Grease or 30/40W Machine Oil to ensure long life and prevent premature wear.
3. Cradle Pins, Pivots and Threaded Adjustor Rods [marked X] should be lubricated with a Light Bearing Grease or 30/40W Machine Oil to ensure long life and prevent premature wear.
4. Pivoting Pump Handle Type Mechanisms should be lubricated with a light bearing grease or 30W/40W Machine Oil.

6. SERVICE & REPAIR

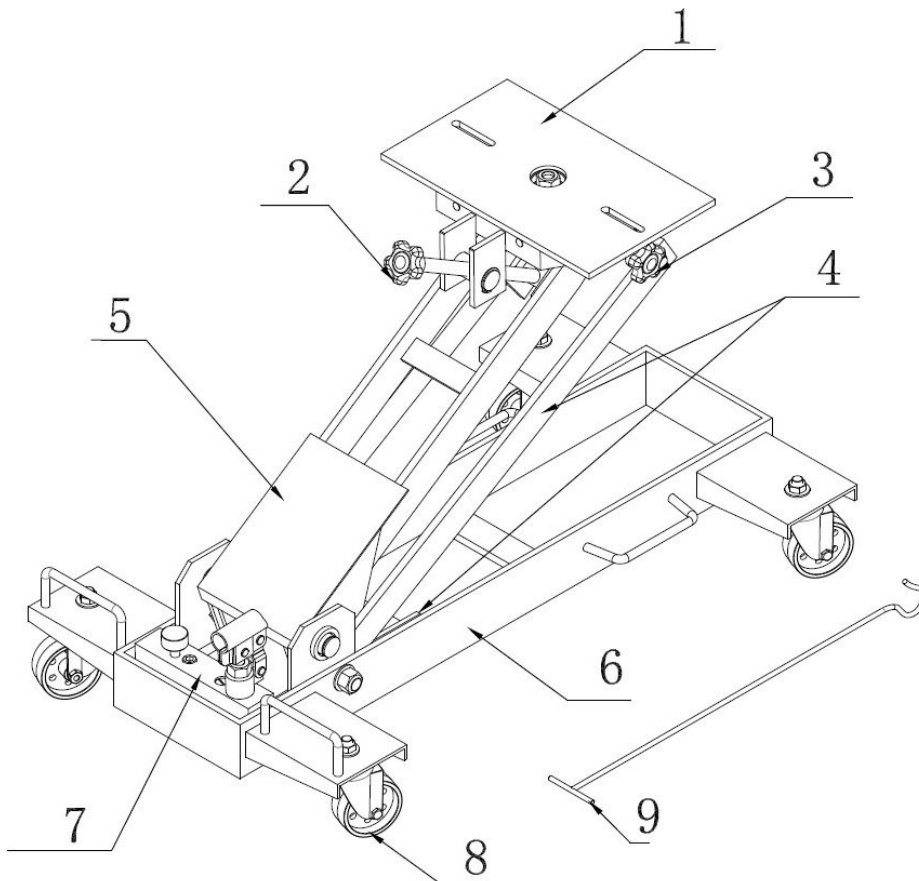
Any Transmission Lifter found damaged in any way, or found to be worn or operates abnormally should be removed from service until repaired by an authorised service agent. Owners and / or operators should be aware that repair of this product may require specialised equipment and knowledge. Only authorised parts, labels and decals shall be used on this equipment. Annual inspection of the transmission lifter is recommended and can be made by an authorised repair facility to ensure that your equipment is in optimum condition and that the equipment has the correct decals and safety labels specified by the manufacturer.

PARTS DIAGRAM

Part	Description	Qty
1	Working Table	1
2	Adjusting Handle	1
3	Adjusting Handle	1

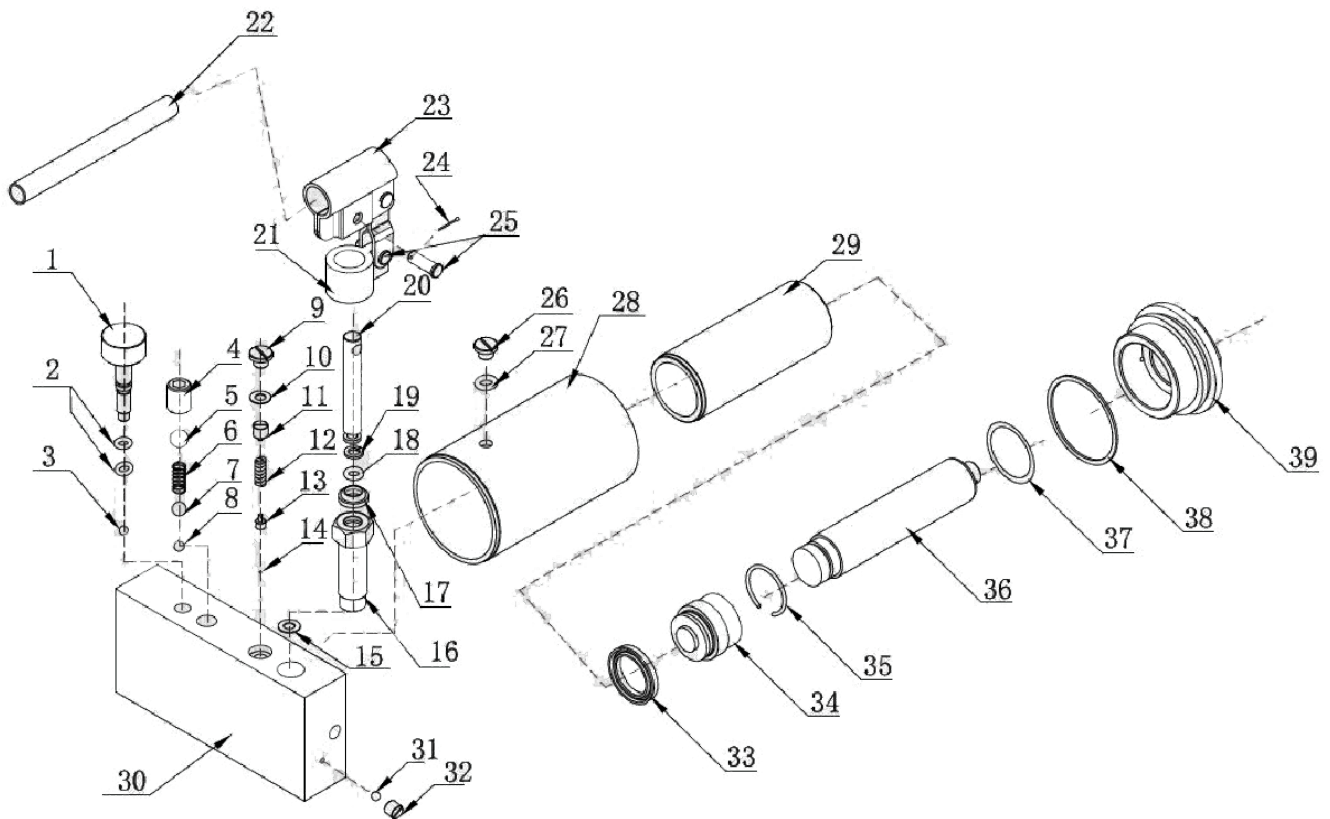
Part	Description	Qty
4	Connect Rod	1
5	Upper Frame	1
6	Main Frame	

Part	Description	Qty
7	Pump	1
8	Castor Wheel	4
9	Towing Hook	1



PARTS LIST

Parts #	Description	Qty	Parts #	Description	Qty
1	Release Valve Lever	1	21	Pump Washer M25x9x1.2	1
2	O Ring	2	22	Oil Seal Screw M10x1x15	2
3	Steel Ball M7	1	23	O Ring M8.5x2.65	2
4	Lock Screw	1	24	Oil Seal Screw M10x1x15	1
5	Steel Ball M12	1	25	Flat Washer M15x8.5x2	1
6	Spring	1	26	Pressure Adjusting Screw M10x1	1
7	Steel Ball M9.5	1	27	Pressure Adjusting Spring M7.5x2x16.5	1
8	Steel Ball M7	1	28	Ball Head	1
9	Oil Seal Screw	1	29	Steel Ball M4	1
10	Rubber Flat Washer	1	30	Screw M16x20	1
11	Pressure Adjusting Screw	1	31	Steel Ball M12	1
12	Spring	1	32	High Pressure Spring M0.6x9.5x22	1
13	Round Pin M8x32	1	33	Steel Ball M9.5	1
14	Rod M 28.5x65	1	34	Steel Ball M6	1
15	Pump Core M14x82	1	35	Oil Return Valve	1
16	O Ring M9.5x2.65	1	36	O ring M7.8x1.9	1
17	Polyurethane M8x14x6	1	37	Base	1
18	Pump Body m27x14x68	1	38	Cotter Pin M4x40	1
19		1	39		1
20		1			



TROUBLESHOOTING

Problem	Symptom	Cause	Conclusion	Solution
Jack will not lift using manual pump	Manual pump has no resistance, lift arm will not raise	Release handle valve pin obstructed	Valve seat/check ball failure	Re-adjust release handle position
		Load weight exceeds lift capacity & overload actuated	Higher capacity jack required	Select higher capacity Jack
	Manual pump has resistance, lift ram raises and falls with up and down pump strokes	Main check ball fails to seal	Relief valve needs reset	Contact qualified technician for repairs
			Obstruction in main check valve	Bleed pump and ram as per owners manual instructions
Jack will not hold load	Load cannot be sustained, lift ram drops under load	Release valve closed but failure to raise lift arm	Valve check ball off centre not contacting valve seat correctly	Contact qualified technician for repairs
		Damaged main seal external leak at lift ram	Replace main ram seals	Contact qualified technician for repairs
	Pump handle rises	Main check valve obstructed	Replace main check valve ball and reseal valve seat	Contact qualified technician for repairs
Poor lift performance	Pump has no resistance, lift ram will not raise to full stroke	Low oil level	Fill fluid to correct level	Fill fluid to correct level then bleed system
		Air trapped in system due to cavitation caused by air pressure build up in reservoir	Lift ram raised for extended period causing air ingress to hydraulic system	With ram fully retracted, open the breather to let pressurised air escape then bleed system
				Contact qualified technician for repairs

PRODUCT INFORMATION TIPS

PRODUCT INFORMATION

How to extend the life of your Transmission Lifter

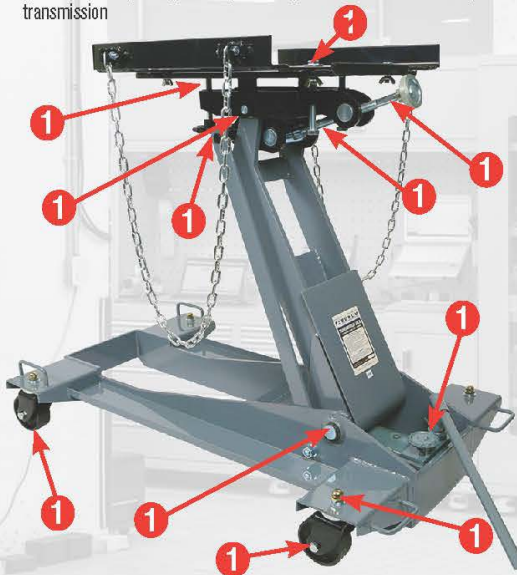
7 Top Tips

to extend the life of your **TQB BRANDS** or **BORUM** Transmission Lifter

Includes Models: 2081T, 2057T & BHDTJ2

1 Regularly lubricate the tilt adjust rods, pivot points and castors.

Lubrication of all pivots, pins, adjusters, and castor wheels ensures smooth operation during lifting and adjustment procedures while removing a transmission



2 Always store in the fully lowered position.

Storage in the lowered position ensures the lift ram assembly is sealed from exposure to weather fluctuations and keeps the hydraulic ram seals in a relaxed condition ready to work when required.

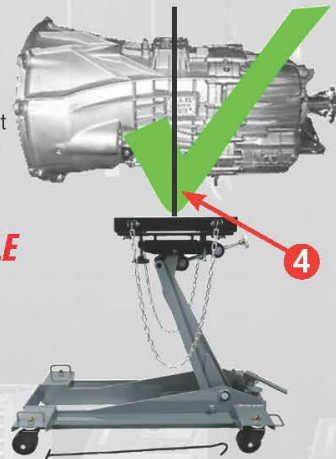


3 Never use trans lifter for supporting loads.

To ensure long life of the hydraulic lift ram seals, a load must not be supported above the fully lowered position. Once a transmission is removed from a vehicle the loaded transmission lift must be fully lowered where the internal mechanical travel stops can support the load.

4 Centering & balancing load on the platform.

Correct balance of the load is a critical factor where unbalanced loads can affect the smooth lowering and raising operation. Always consult your vehicle manufacturer specifications for the correct lift point when attaching transmission lifter to a transmission.



BALANCED LOADING EXAMPLE



5 Use correct model for intended applications.

The following chart explains model suitability based on GVM and Transmission type.

TQB BRANDS Recommendation for Application Domestic/Commercial Vehicles								
	GVM LESS THAN 2000KG	GVM LESS THAN 2300KG	GVM LESS THAN 2500KG	GVM LESS THAN 3200KG	GVM LESS THAN 3500KG	TWO WHEEL DRIVE	ALL WHEEL DRIVE	4 X 4
2081T	Y	Y	Y	N	N	Y	N	N
2057T	Y	Y	Y	Y	Y	Y	Y	Y
*BHDTJ2	Y	Y	Y	Y	Y	Y	Y	Y

* BHDTJ2 is also suitable for use with light to heavy commercial vehicles including agricultural and earthmoving vehicles with transmissions such as Multi Geared Manual, Automated Manual and Automatic such as Allison, Eaton, Fuller, Road Ranger, Dana, Rockwell, Meritor, TTC, Spicer, Volvo, Scania, ZF, Mercedes Benz, Man, Iveco, Isuzu, Mitsubishi FUSO, Hino, UD, Toyota.
Please always consult your Vehicle Manufacturer for suitability and safe practice.

6 Read the user Manual thoroughly and keep a copy easily accessible.

The user's manuals are important to the initial set up and ongoing maintenance and come with each transmission jack, they are also downloadable from our webpage at www.tqbbrands.com.au

7 Visit our webpage for instructional videos.

We have created instructional videos for our range of transmission jacks which include bleeding procedures and product comparisons. You'll find these at www.tqbbrands.com.au



WARRANTY

TradeQuip products have been carefully tested and inspected before shipment and are guaranteed to be free from defective materials and workmanship for a period of 12 months from the date of purchase except where tools are hired out when the guarantee period is ninety days from the date of purchase.

Should the machine develop any fault, please return the complete tool to your nearest authorised warranty repair agent or contact TQB Brands Pty Ltd Warranty team – warranty@tqbbrands.com.au.

If upon inspection it is found that the fault occurring is due to defective materials or workmanship, repairs will be carried out free of charge. This guarantee does not apply to normal wear and tear, nor does it cover any damage caused by misuse, careless or unsafe handling, alterations, accident, or repairs attempted or made by any personnel other than the authorised TQB Brands Pty Ltd repair agent.

This guarantee applies in lieu of any other guarantee expressed or implied and variations of its terms are not authorised.

Your TQB Brands Pty Ltd guarantee is not effective unless you can produce upon request a dated receipt or invoice to verify your proof of purchase within the 12 month period.

Consumer Guarantee

Our goods come with a guarantee that cannot be excluded under the Australian Consumer Law. You are entitled to a replacement or refund for a major failure and compensation for any other reasonably foreseeable loss or damage. You are also entitled to have the goods repaired or replaced if the goods fail to be of acceptable quality and the failure does not amount to a major failure.



All images and illustrations shown are for reference purposes only. All information, specifications and illustrations in this manual are based on the latest information available at the time of publication and are subject to change without notice. The information in this manual is periodically revised to ensure the latest information is included. Download the latest version of this manual and other related technical documentation from www.tqbbrands.com.au.