

Owners Manual

Product Code: 2079

MADE FOR THE
TRADE

TQ TRADEQUIP
the trusted brand in equipment

**SWIVEL BASE
UTILITY CRANE**



Specifications:

- Safe Working Capacity: 900kgs
- Maximum Reach of Boom: 1290mm (400kg) 870mm (900kg)
- Min Lift Radius: 930mm
- Max Lift Radius: 1800mm
- Swivel Base Plate: 275 x 275mm
- Mounting Base Holes: 8 holes - 16mm (dia) x 110mm (centre-centre)

About the **TradeQuip** brand

The '**TradeQuip**' brand of workshop equipment, is designed for use in a demanding workshop environment by professional users. With proven and trusted "**Made for the Trade**" reliability, '**TradeQuip**' branded products offer the very best in performance for an affordable price. All backed by a 1year trade guarantee across 1,000+ distributors Australia wide.

TQ TRADEQUIP
the trusted brand in equipment

TQPRO
Trusted by serious professionals

BORUM
INDUSTRIAL WORKSHOP EQUIPMENT

WARNING

IMPORTANT: READ ALL INSTRUCTIONS BEFORE USE



WARNING

The instructions and warnings contained in this manual should be read and understood before using or operating this equipment. Do not allow anyone to use or operate this equipment until they have read this manual and have developed a thorough understanding of how this equipment works. Failure to observe any of the instructions contained in the manual could result in severe personal injury to the user or bystanders, or cause damage to the equipment and property. Keep this manual in a convenient and safe place for future reference.

Whilst every effort has been made to ensure accuracy of information contained in this manual, the TQB Brands Pty Ltd policy of continuous improvement determines the right to make modifications without prior warning.

CONTENT

WARNING.....2

CONTENT.....2

ASSEMBLY, OPERATION, PREVENTITIVE MAINTENANCE4

PARTS LIST.....8

WARRANTY.....9

STANDARD OPERATING PROCEDURE

DO NOT use this machine unless you have been trained and assessed to a competent level in its safe use and operation, and have been given permission to use this



DO NOT tilt the unit



Wear the correct PPE

PRE-OPERATIONAL SAFETY CHECKS

- Before using this hydraulic crane ensure it is in sound condition, and good working order.
- Always inspect the chain and hook prior to use.
- Replace or repair damaged parts. *Use recommended parts only. Non-authorized parts may be dangerous and will invalidate the warranty.*
- Use on a firm, level surface capable of sustaining the hydraulic crane lift and the load.
- Operators should maintain correct balance and footing. Ensure the floor is not slippery and wear non-slip shoes.
- Ensure all non-essential persons keep a safe distance whilst the crane is in use.
- Stay alert, watch what you are doing and use common sense when operating a ute crane. Do not use a ute crane while you are tired or under the influence of drugs, alcohol or medication.
- Always make sure the vehicle is in park, the engine is off, the parking brake is set and the wheels are chocked before use.
- Always ensure the vehicle and the load is stable.
- Keep the crane clean for best and safest performance.

POTENTIAL HAZARDS

- DO NOT exceed the safe working capacity 900kg @ boom length 870mm or 400kg @ boom length 1290mm.
- DO NOT lift an object when the vehicle is in motion.
- DO NOT operate the crane with loose connections or if damaged.
- DO NOT allow untrained persons to operate the crane.
- DO NOT use the crane to lift or support personnel.

⚠ DANGER: DO NOT stand beneath, in front of, or too close to the side of the load.

HOUSEKEEPING

1. Crane boom must always be stored and secured in the down position when not in use. This is to protect the chrome ram from elements/corrosion etc and to safely drive the vehicle without having the boom swing around dangerously.
2. Lubricate joints and connections after every use.
3. Keep the crane clean for best and safest performance.
4. This utility crane should always be kept under cover when not in use to minimise corrosion.

INTENDED USE

To raise and/or lower loads from a raised height once mounted to a suitable mounting point capable of sustaining the combined load of the equipment and working piece.

ASSEMBLY, OPERATION, PREVENTITIVE MAINTENANCE

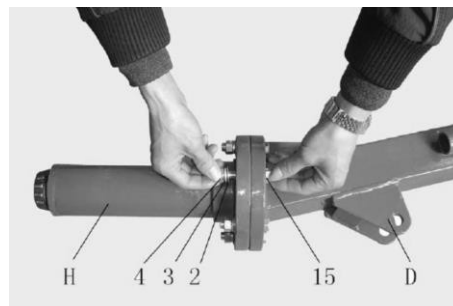
1. FEATURES & MODELS

The TradeQuip "Made for the Trade" steel ute crane effortlessly lifts items from the ground to ute/truck tray height, then rotates them into the cargo area. The telescopic boom design with manual hydraulic hand pump pivots the boom up and down and swivels 360° for maximum accessibility. Get extra lift where you need it most with this Tradequip Utility Crane that easily lifts loads to 900kg. The steel boom extends up to 1290mm and the base swivels to help you get the best angle when hoisting items onto your ute or truck bed. The pickup crane folds away when not in use.

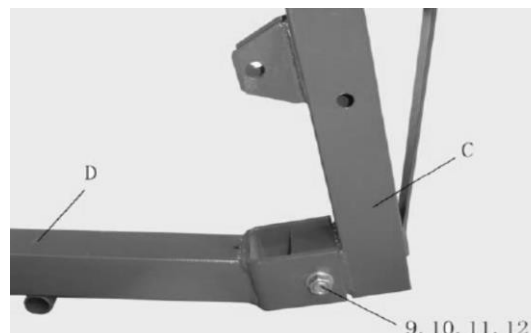
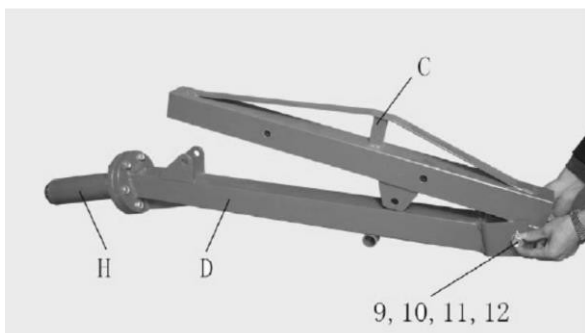
2. ASSEMBLY

Unpacking: after removing the packing material, make sure the product is in perfect condition and that there are no visible damaged parts.

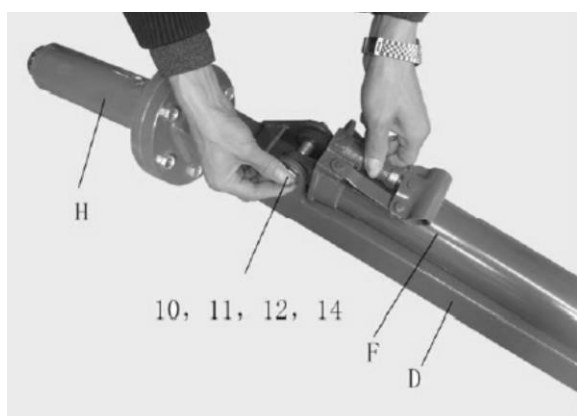
1. Assemble the Turn table (H) to the Main Post (D).



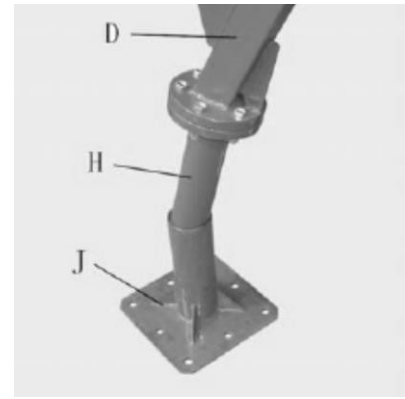
2. Fix the Boom (C) to the Main Post



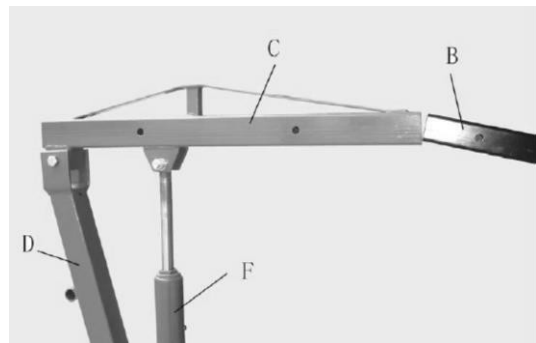
3. Connect the Hydraulic Ram (F) to the Boom Main Post



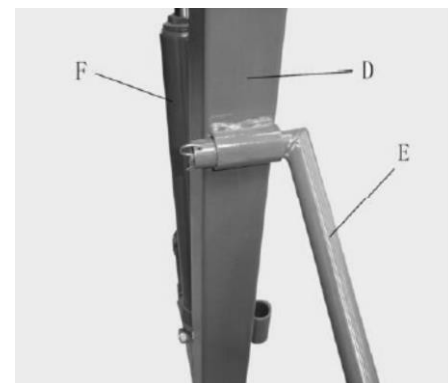
- Secure the Base (J) to the utility bed, garage floor, or where the hoist will be used. Insert the assembled parts (Main Post, Boom and Hydraulic Ram) to the Base.



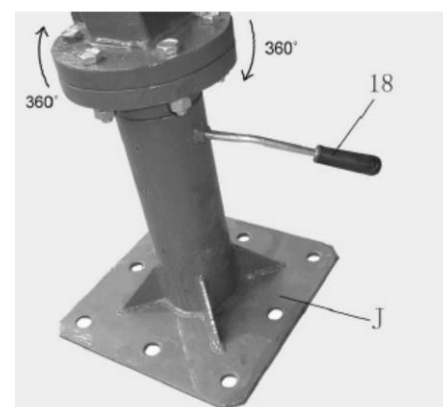
- Insert the Boom Extension (B) into the Boom.



- Attach the Handle (E) to the Main Post, securing it with the Hitch Pin (17).



- Attach the Wheel Binding Bolt (18) to the Base.



3. BEFORE USE

Prior to each use conduct a visual inspection checking for abnormal conditions, such as cracked welds, leaks, and damaged, loose, or missing parts.

Prior to first use bleed the hydraulic system to eliminate any air that may have entered during shipping.

Bleeding Hydraulic System:

1. Leave the pump for 1 hour to allow the oil to settle before bleeding the system. **Note:** Failure to allow sufficient time for oil to settle could result in air remaining in the oil. In this event, the pump will not bleed completely requiring a second bleed of the system.
2. Bleed the hydraulic circuit to eliminate any air in the system by opening the release valve and pumping the pump handle 15 to 20 times.
3. Test the lift, unladen, by raising the lift to full height and then lowering. Open the release valve slowly to control the rate of descent.

4. INSPECTION

- Prior to each use conduct a visual inspection checking for abnormal conditions, such as cracked welds, leaks, and damaged, loose, or missing parts.
- The crane shall always be maintained in accordance with the maintenance instructions. No alterations or modifications shall be made to this utility crane.
- Inspections shall be performed in accordance with this owner's manual.
- The utility crane must be inspected immediately if it is believed to have been subjected to abnormal load or shock.
- Owners and /or operators should be aware that repair of this product may require specialised equipment and knowledge (refer to maintenance section).

5. OPERATION

Lifting a load using a crane can be dangerous. Follow all instructions and precautions below.



WARNING:

DO NOT lift any products with the vehicle engine running.

ALWAYS ensure the handbrake is engaged on the vehicle before making any adjustments.

NEVER work on a load suspended by the crane

NEVER place any part of your body under the suspended load.

CAUTION: Make sure the ground is clear and no obstacles are in the path of the crane.

- With the boom (2) lowered to the same height as the load, rotate crane into position over the load to be lifted. Fit the pump handle (8) to the pressure release valve (11) (Fig. 9) and twist completely clockwise to close the valve (do not over tighten).
- Place pump handle (8) into the pump actuator (12) and slowly pump handle until the boom begins to raise.
- Attach the hook and chain (1) to the sling, chain or load levelling device (not included) making sure the device is securely attached to the load and is suitably rated to hold the weight.
- Slowly pump the handle until the crane begins to support the load being lifted. Double check the load being lifted is firmly supported by the crane, chain, sling or levelling device.
- Pump the pump handle (8) to raise the working load to the desired height.
- Using the rotation handle (10) slowly swing the load to the desired lowering location.
- Note: Never leave the load suspended for long periods of time, as soon as practicable the load should be lowered.
- Fit the handle of the hydraulic pump (6) to the pressure release valve (11) and slowly twist anti-clockwise until load begins to lower (Do not loosen any more than 2 full rotations). Excessive speed or jerky motion can cause the load to slip leading to property damage or personal injury.

CAUTION: This product is intended for lifting purpose only, not for supporting loads.

Promptly support and secure the load immediately after lifting.

DO NOT overload this crane beyond its rated capacity.

6. STORAGE

Crane boom must always be stored and secured in the down position when not in use. This is to protect the chrome ram from elements/corrosion etc and to safely drive the vehicle without having the boom swing around dangerously. This Hydraulic Utility Crane should always be stored under cover in a dry location and on a level surface.

7. MAINTENANCE

- Keep the crane clean and wipe off any oil or grease. Lubricate all moving parts.
- Periodically check the ram and piston for signs of corrosion. Clean the exposed areas with a clean oiled cloth.
- Before each use check all parts. If any part of the crane is damaged or suspect, remove the crane from service and take necessary action to repair.
- Check the hydraulic oil level. If it is not adequate, remove the rubber plug on the pump and add hydraulic oil if necessary.



DO NOT use brake fluid or any other improper fluid. Only good quality hydraulic jack oil can be used.

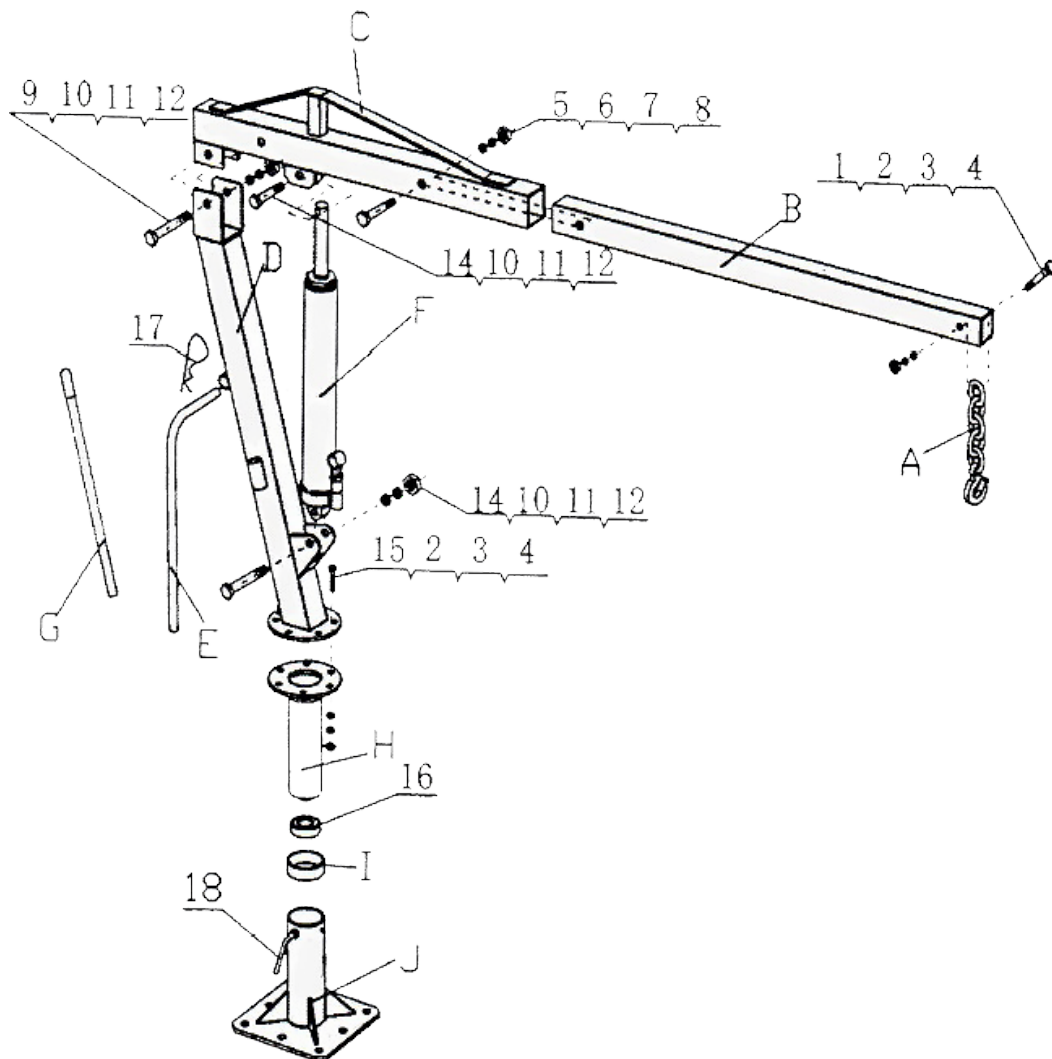
- When lift efficiency drops, bleed away air from the hydraulic system as described in 3.2.
- Only use replacement parts that are approved by the manufacturer.
- Regularly clean all surfaces and maintain all labels and warnings.

8. SERVICE & REPAIR

Any Hydraulic Utility Crane found damaged in any way, or found to be worn or operates abnormally should be removed from service until repaired by an authorised service agent. Owners and / or operators should be aware that repair of this product may require specialised equipment and knowledge. Only authorised parts, labels and decals shall be used on this equipment. Annual inspection of the hydraulic lift is recommended and can be made by an authorised repair facility to ensure that your equipment is in optimum condition and that the equipment has the correct decals and safety labels specified by the manufacturer.

PARTS LIST

Part #	Description	QTY	Part #	Description	QTY
A	Chain and Hook	1	5	Bolt M14x90	1
B	Boom Extension	1	6	Flat Washer °14	1
C	Boom	1	7	Lock Washer °14	1
D	Main Post	1	8	Nut M14	1
E	Handle	1	9	Bolt M16x110	1
F	Hydraulic Ram	1	10	Flat Washer °16	3
G	Pump Handle	1	11	Lock Washer °16	3
H	Turn Table	1	12	Nut M16	3
I	Wheel Hub	1	13	Bolt M16x80	1
J	Base	1	14	Bolt M16x95	1
1	Bolt M12x75	1	15	Bolt M12x40	6
2	Flat Washer °12	7	16	Bearing	1
3	Lock Washer °12	7	17	"R" Pin	1
4	Nut M12	7	18	Wheel Binding Bolt	1



WARRANTY

TradeQuip products have been carefully tested and inspected before shipment and are guaranteed to be free from defective materials and workmanship for a period of 12 months from the date of purchase except where tools are hired out when the guarantee period is ninety days from the date of purchase.

Should this piece of equipment develop any fault, please return the complete tool to your nearest authorised warranty repair agent or contact TQB Brands Pty Ltd Warranty team – warranty@tqbbrands.com.au.

If upon inspection it is found that the fault occurring is due to defective materials or workmanship, repairs will be carried out free of charge. This guarantee does not apply to normal wear and tear, nor does it cover any damage caused by misuse, careless or unsafe handling, alterations, accident, or repairs attempted or made by any personnel other than the authorised TQB Brands Pty Ltd repair agent.

This guarantee applies in lieu of any other guarantee expressed or implied and variations of its terms are not authorised.

Your TQB Brands Pty Ltd guarantee is not effective unless you can produce upon request a dated receipt or invoice to verify your proof of purchase within the 12 month period.

Consumer Guarantee

Our goods come with a guarantee that cannot be excluded under the Australian Consumer Law. You are entitled to a replacement or refund for a major failure and compensation for any other reasonably foreseeable loss or damage. You are also entitled to have the goods repaired or replaced if the goods fail to be of acceptable quality and the failure does not amount to a major failure.



All images and illustrations shown are for reference purposes only. All information, specifications and illustrations in this manual are based on the latest information available at the time of publication and are subject to change without notice. The information in this manual is periodically revised to ensure the latest information is included. Download the latest version of this manual and other related technical documentation from www.tqbbrands.com.au.