

Superior quality since
1984



Owners Manual

WHEEL DOLLY SINGLE 250KG

B O R U M
INDUSTRIAL WORKSHOP EQUIPMENT

**INDUSTRIAL
QUALITY**



Specifications:

- Rate Capacity: 250 kg
- Maximum width: 305 mm
- Maximum height: 1000 mm
- Product Weight: 11.5 kg

Features:

- Adjustable arms
- Equipped with rollers for easy positioning.
- Stop rollers on the rear side.
- Ergonomic handle with rounded & soft safety grip

Description:

The BORUM WHEEL DOLLY is a sturdy & handy transport aid for various types of wheels (trucks, vans, utes and cars). This versatile and easy to operate piece of equipment feature adjustable arms. Equipped with two wheels and an ergonomic handle, the unit's maneuverability is not hampered by the size of the wheel.

About the Borum brand

Our **"heavy duty commercial"** range of **Borum Industrial** equipment has been manufactured to exacting standards for the past **34 years**. We specify industrial quality components and design to ensure a long and durable working life in **commercial transport, mining, earthmoving and railway** environments. Our **Borum Industrial** range of equipment is focused on achieving superior professional standards, reliability, quality, and are covered by a **12 month trade use warranty**.

WARNING INFORMATION

IMPORTANT: READ ALL INSTRUCTIONS BEFORE USE



WARNING

The instructions and warnings contained in this manual should be read and understood before using or operating this equipment. Do not allow anyone to use or operate this equipment until they have read this manual and have developed a thorough understanding of how this equipment works. Failure to observe any of the instructions contained in the manual could result in severe personal injury to the user or bystanders, or cause damage to the equipment and property. Keep this manual in a convenient and safe place for future reference.

The warnings, cautions and instructions discussed in this instruction manual cannot cover all possible conditions and situations that may occur. It must be understood by the operator that common sense and caution are factors which cannot be built into this product, but must be supplied by the operator.

Whilst every effort has been made to ensure accuracy of information contained in this manual, the Borum policy of continuous improvement determines the right to make modifications without prior warning.

CONTENTS

WARNING INFORMATION	2
STANDARD OPERATING PROCEDURE	3
ASSEMBLY, OPERATION, PREVENTITIVE MAINTENANCE	4
PARTS LIST & DIAGRAM.....	6
WARRANTY.....	7

STANDARD OPERATING PROCEDURE

OPERATIONAL SAFETY INFORMATION

- KEEP work area clean and well lit. Cluttered or dark work areas invite accidents.
- ALWAYS wear suitable personal protective clothing, gloves and eyewear manufactured to the latest Australian Safety Standards.
- ALWAYS ensure that adequate lighting is available. A minimum intensity of 300 lux should be provided. Ensure that lighting is placed so that you will not be working in your own shadow.
- ALWAYS secure and fully support vehicle.
- DO NOT use this equipment to raise or move any part of a vehicle.
- ALWAYS use according to vehicle's service instructions only. It is beyond the scope of this manual to provide rim/tyre repair guidelines. It is the USERS RESPONSIBILITY to consult a rim/tyre repair technical manual for full instructions for each type of rim or tyre.
- Do not overload this wheel dolly beyond its rated capacity. Overloading beyond its rated capacity can cause damage to or failure of the wheel dolly.
- No person should get any part of their body beneath a wheel that is loaded.
- Use only on hard level surfaces. Use on anything other than hard level surfaces can result in instability.
- Keep hands & feet clear of the tilting load ground contact area when under load.
- DO NOT operate the unit if damaged.
- DO NOT allow untrained persons to operate this wheel dolly.
- Never lift people
- Locate the load centrally on the dolly.
- Ensure all non-essential persons keep a safe distance whilst the wheel dolly is in use.
- Maintain correct balance and footing. Ensure the floor is not slippery and wear non-slip shoes.
- When servicing, use only Borum identical replacement parts. Use of any other parts will void the warranty.
- Use the right product for the job. There are certain applications for which this wheel dolly was designed. Do not modify and do not use for a purpose for which it was not intended.

INTENDED USE:

This Wheel Lifter is designed to facilitate the removal, installation and short distance transportation of pneumatic tyres and wheel assemblies up to a maximum of 250KG.

ASSEMBLY, OPERATION, PREVENTITIVE MAINTENANCE

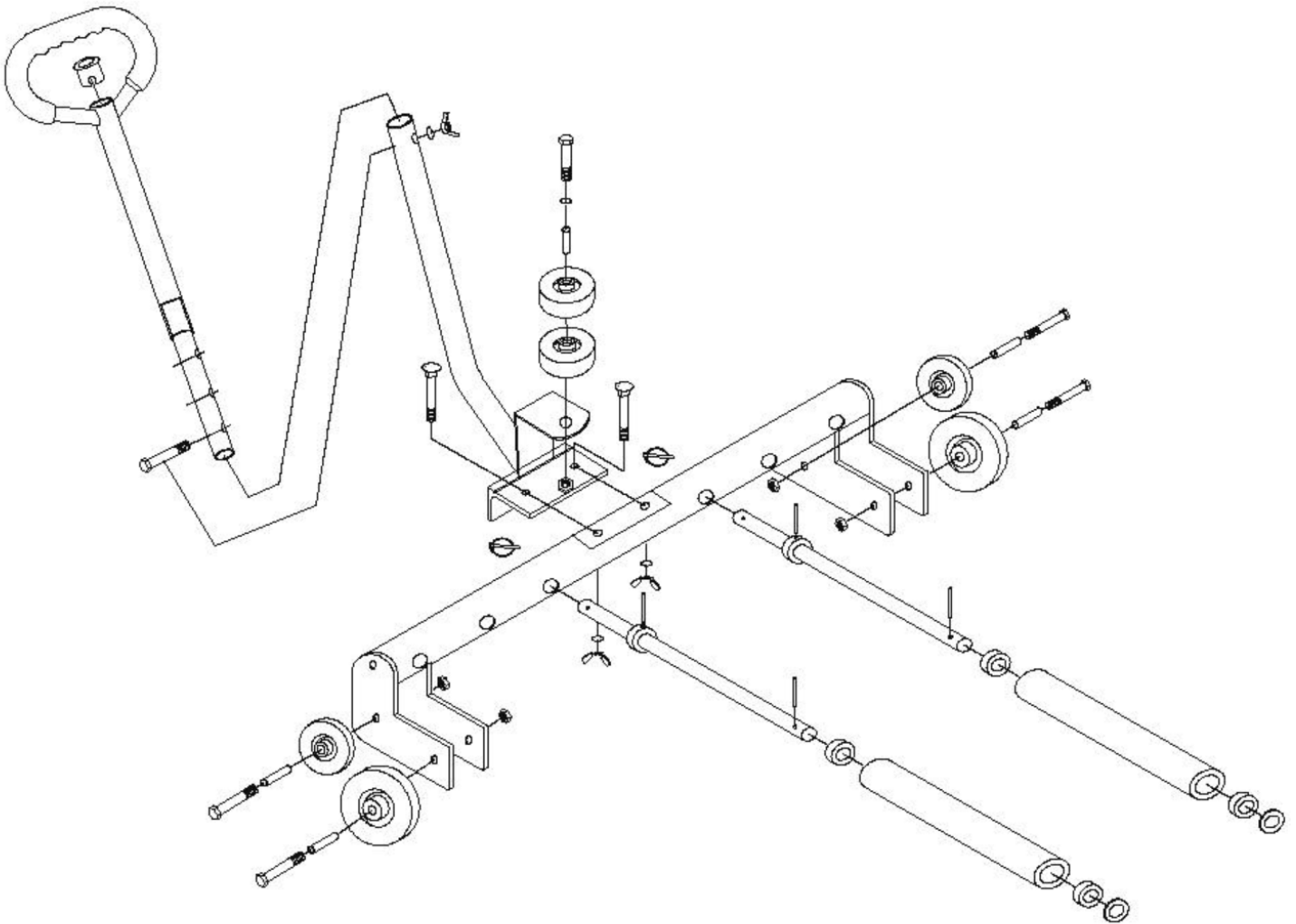
1. FEATURES

This **Borum Industrial** Wheel Dolly is designed for the removal, installation and transportation of single, pneumatic wheel and tyre combinations up to 250KG over a short distance. The adjustable support rollers allow for easy rotation/inspection of the wheel and tyre assembly once removed from the vehicle. This wheel dolly serves to support only during mounting and/or removal of a truck wheel. It is critical that only qualified and trained operators should use and/or maintain this product

2. ASSEMBLY

Unpacking: after removing the packing material, make sure the product is in perfect condition and that there are no visible damaged parts. The packaging materials (Polyethylene bags, polystyrene etc.), must be disposed of in an appropriate refuse collection container. These materials must not be left within the reach of children as they are potential sources of danger.

Review image below for assembly instructions



3. BEFORE USE

Conduct a thorough visual inspection checking for any abnormal conditions such as cracked welds, and damaged, loose, or missing parts.

Apply grease to the front support rollers and wheel bearings.

Lubricate all moving components

A periodic coating of light lubricating oil to pivot points, axles and hinges will help to prolong the life of this wheel dolly.

4. OPERATION

Prior to each use always conduct a visual inspection checking for and any abnormal conditions, such as cracked welds, and damaged, loose, or missing parts.

1. Set emergency brake, chock tyres of diagonally opposed wheel/s in both directions AND take every precaution necessary to ensure set up is stable and prevent inadvertent vehicle movement.
2. Jack up the vehicle and secure on safety stands or blocking devices immediately. DO NOT work under an unsecured load!
3. When tyre & wheel assembly are ready to remove, position wheel dolly rollers to the required width to accept the tyre & wheel assembly.
4. Position the dolly under the wheel and tyre assembly.
5. Loosen the wheel nuts carefully
6. Use dolly handle to tilt the dolly up and take the weight of the wheel and tyre assembly.
7. With one hand on the handle, slowly wheel the dolly backwards, using your free hand to support the top of the tyre.

Note: Do not use wheel dolly to free a seized wheel assembly. For typical practice of taking out a seized wheel assembly, a long metal bar can be used to pry the wheel assembly from the stuck wheel axle. If in doubt, always follow vehicle's manufacturer manual on how to remove tire & wheel assembly.

8. Support the top of the tyre with your free hand for the duration of the maneuver.
9. Follow process in reverse order to re-install wheel on to vehicle using the alignment pin to easily locate the wheel studs.

5. STORAGE

When not in use, always store this Wheel Dolly with the rollers facing away from foot traffic areas to avoid a tripping hazard. Apply a coating of light lubricating oil to pivot points and hinges to help prevent rust and assure that assemblies move freely. Store in a dry and secure location.

6. MAINTENANCE

Inspection:

Inspect this Wheel Dolly for damage, wear, broken or missing parts and that all components function before each use.

Cleaning:

Periodically check the wheels and rollers for signs of rust or corrosion. Clean as needed and wipe with an oily cloth. Never use sandpaper or abrasive material on these surfaces.

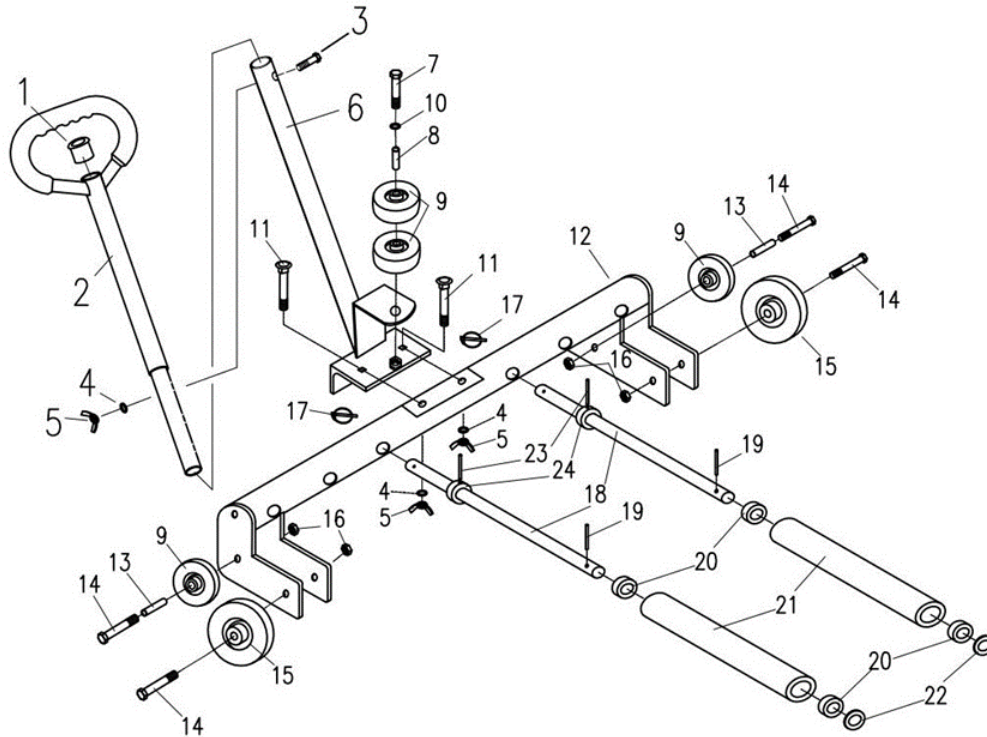
Lubrication:

Application of a coating of light lubricating oil to all moving parts and pivot points will help to prevent rust and ensure these parts are able to move freely.

7. SERVICE & REPAIR

Any Wheel Dolly found damaged in any way, or found to be worn or operates abnormally should be removed from service until repaired by an authorised service agent. Owners and / or operators should be aware that repair of this product may require specialised equipment and knowledge. Only authorised parts, labels, decals shall be used on this equipment. Annual inspection of the Wheel Dolly is recommended and can be made by an authorised repair facility to ensure that your equipment is in optimum condition and that the equipment has the correct decals and safety labels specified by the manufacturer.

PARTS LISTING



Parts list								
Item	Description	Quantity	Item	Description	Quantity	Item	Description	Quantity
1	Handle cap	1	9	Wheel	4	17	Snap Pin	2
2	Rear Handle	1	10	Washer 12	1	18	Axle	2
3	Bolt M10x50	1	11	Bolt M10x85	2	19	Spring Pin 6x30	2
4	Spring Washer 10	3	12	Base Frame	1	20	Ball Bearing 6004-2Z	4
5	Wing Nut M10	3	13	Bushing	2	21	Roller	2
6	Front Handle	1	14	Screw M10x65	4	22	Washer 20	2
7	Screw M10x95	1	15	Wheel	2	23	Spring Pin 4x30	2
8	Bushing	1	16	Lock Nut M10	4	24	Bushing	2

WARRANTY

BORUM Industrial products have been carefully tested and inspected before shipment and are guaranteed to be free from defective materials and workmanship for a period of 12 months from the date of purchase except where tools are hired out when the guarantee period is ninety days from the date of purchase. Should this piece of equipment develop any fault, please return the complete tool to your nearest authorised warranty repair agent or contact TQB Brands Pty Ltd Warranty team – warranty@tqbbrands.com.au.

If upon inspection it is found that the fault occurring is due to defective materials or workmanship, repairs will be carried out free of charge. This guarantee does not apply to normal wear and tear, nor does it cover any damage caused by misuse, careless or unsafe handling, alterations, accident, or repairs attempted or made by any personnel other than the authorised TQB Brands Pty Ltd repair agent. This guarantee applies in lieu of any other guarantee expressed or implied and variations of its terms are not authorised.

Your TQB Brands Pty Ltd guarantee is not effective unless you can produce upon request a dated receipt or invoice to verify your proof of purchase within the 12month period.

Consumer Guarantee

Our goods come with a guarantee that cannot be excluded under the Australian Consumer Law. You are entitled to a replacement or refund for a major failure and compensation for any other reasonably foreseeable loss or damage. You are also entitled to have the goods repaired or replaced if the goods fail to be of acceptable quality and the failure does not amount to a major failure.



All images and illustrations shown are for reference purposes only. All information, specifications and illustrations in this manual are based on the latest information available at the time of publication and are subject to change without notice. The information in this manual is periodically revised to ensure the latest information is included. Download the latest version of this manual and other related technical documentation from www.tqbbrands.com.au