

Superior quality since  
1984



# Owners Manual

## HYDRAULIC WORKSHOP PRESS

# BORUM

INDUSTRIAL WORKSHOP EQUIPMENT

**INDUSTRIAL  
QUALITY**



### Specifications

- Safe Working Capacity: 20,000kg
- Working Range: 38-918mm
- Overall Height: 1626mm
- Overall Width: 730mm
- Overall Depth: 560mm
- Bed Outside: 172mm
- Bed Inside: 152mm
- Bed Width: 510mm
- Ram Stroke: 185mm
- Ram Diameter: 72mm
- Nett Weight: 182kg
- Carton: 2120 x 780 x 270mm
- Gross Weight: 212kg

### About the Borum brand

Our “**heavy duty commercial**” range of Borum Industrial equipment has been manufactured to exacting standards for the past **34 years**. We specify industrial quality components and design to ensure a long and durable working life in **commercial transport, mining, earthmoving and railway** environments. Our Borum Industrial range of equipment is focused on achieving superior professional standards, reliability, quality, and are covered by a **12month trade use warranty**.

# WARNING INFORMATION



## IMPORTANT: READ ALL INSTRUCTIONS BEFORE USE

 **WARNING**

The instructions and warnings contained in this manual should be read and understood before using or operating this equipment. Do not allow anyone to use or operate this equipment until they have read this manual and have developed a thorough understanding of how this equipment works. Failure to observe any of the instructions contained in the manual could result in severe personal injury to the user or bystanders, or cause damage to the equipment and property. Keep this manual in a convenient and safe place for future reference.

The warnings, cautions and instructions discussed in this instruction manual cannot cover all possible conditions and situations that may occur. It must be understood by the operator that common sense and caution are factors which cannot be built into this product, but must be supplied by the operator.

Whilst every effort has been made to ensure accuracy of information contained in this manual, the Borum policy of continuous improvement determines the right to make modifications without prior warning.

# CONTENTS

WARNING INFORMATION .....	1
STANDARD OPERATING PROCEDURE .....	2
ASSEMBLY, OPERATION, PREVENTITIVE MAINTENANCE .....	3
PARTS DIAGRAM & PARTS LIST .....	5
WARRANTY .....	9

## STANDARD OPERATING PROCEDURE

**DO NOT** use this machine unless you have been trained and assessed to a competent level in its safe use and operation, and have been given permission to use this



Safety glasses must be worn when operating this equipment



Safety footwear must be worn when operating this equipment



Safety gloves must be worn when operating this equipment



Long loose hair must be contained when operating this equipment



Close fitting/protective clothing must be worn when operating this equipment



Hearing protection must be worn where noise levels are in excess of 85 dB(A) occupational exposure limit

### PRE-OPERATIONAL SAFETY CHECKS

1. Inspect the Hydraulic Workshop Press before each use. Do not use if bent, broken, cracked, leaking or otherwise damaged. Ensure all bolts and nuts are firmly tightened.
2. Do not exceed the products rated maximum load capacity. Never apply excessive force to a work piece.
3. Steel and other materials can shatter, always wear approved impact goggles, heavy duty work gloves and appropriate clothing.
4. If you detect anything that may indicate imminent structural failure, stop using the hydraulic workshop press immediately and inspect thoroughly.
5. Only use this hydraulic workshop press on a surface that is stable, level, dry and non-slippery, and capable of sustaining the load. Keep the surface clean, tidy and free from unrelated materials and ensure that there is adequate lighting.
6. Do not use this hydraulic workshop press to compress springs or any other item that could disengage and cause a potential hazard.
7. Keep hands and feet away from bed area at all times.
8. Do not modify any component of this equipment.
9. Only use this device for the purpose for which it has been designed.
10. When servicing, use only Borum Workshop Press identical replacement parts. Use of any other parts will void the warranty.
11. Use the right product for the job. There are certain applications for which the Hydraulic workshop press was designed. Do not modify the Hydraulic workshop press and do not use the Hydraulic workshop press for a purpose for which it was not intended.

### OPERATIONAL SAFETY CHECKS

1. Only use this Borum Workshop Press on a surface that is stable, level, dry and not slippery, and capable of sustaining the load. Keep the surface clean, tidy and free from unrelated materials and ensure that there is adequate lighting.
2. Ensure that workpiece is always centre-loaded and secure.
3. Use a safe working posture (beware of hair catching).
4. Use a qualified person to maintain the press in good condition. Keep it clean for best and safest performance.

### Intended Use

For regular professional straightening, bending & pressing. Removing and installing gears, bearings and bushings.

# ASSEMBLY, OPERATION, PREVENTITIVE MAINTENANCE

## 1. FEATURES & MODELS

The "**Borum Industrial**" 20,000kg Hydraulic Workshop Press is great for straightening, stamping, bending and pressing any component that is hard to handle. The polished inner cylinder walls extend the life of the hydraulic seals to minimize abrasion and wear, while the cylinder ram and pistons are also polished and chromed, guided by high performance seals, wear rings and dust seals.

"Borum Industrial" Hydraulic Workshop Presses are available in a variety of capacities and sizes. The press frames are designed for maximum strength, reliability and durability. The strong frames and powerful high-pressure hydraulics will provide years of dependable service in many applications. When components need to be removed or assembled, "Borum Industrial" hydraulic presses deliver the controlled power to safely remove and install bearings, gears, U-joints, bushings, ball joints and pulleys with precision and versatility!

## 2. ASSEMBLY

Unpacking: after removing the packing material, make sure the product is in perfect condition and that there are no visible damaged parts. The packaging materials (Polyethylene bags, polystyrene etc.), must be disposed of responsibly in an appropriate refuse collection container. These materials must not be left within the reach of children as they are potential sources of danger.

Components of this Hydraulic Press are heavy. Assembly requires two adults.

Using the parts list and parts diagram page 5, lay out and identify all pieces before assembly.

### Step 1:

Attach one base section (8) to the frame by using bolts (5), washers (9), lock washers (10) and nuts (14), repeat these steps for the other base section (8).

### Step 2:

Insert bed frame pins (4) into the holes in the posts, then insert the joined working table (2) into the press frame and onto bed frame pin.

### Step 3:

Attach the pump (48) and protection cover (49) assemblies to the right post using bolts (37) and washers (42). Connect the oil hose (36) to the connection joint (35) and assemble the pressure gauge (27) to the pressure gauge fitting (29) and oil hose (26) connecting the direct fitting (34) and cylinder (19).

**WARNING!** Take care not to allow the press platform to drop onto the pins and ensure your hands and fingers are clear of the press platform when lowering.

### 3. BEFORE USE

Prior to each use conduct a visual inspection checking for abnormal conditions, such as cracked welds, leaks, and damaged, loose, or missing parts.

#### Installation

1. Securely attach the press to a flat, firm, level surface taking into account clearance for working pieces.
2. Before operating the press, purge the hydraulic system in order to eliminate any air that may have built up during transit. Open the long release valve (P25) and short release valve (P31) by turning them counter-clockwise
3. Pump the handle several full strokes and close the release valve. Should the system malfunction at any time, repeating this process may resolve the problem.



**DANGER!** Models are purpose designed to withstand greater loads than the hydraulic units can develop. For safety reasons, always ensure the workpiece and press tools are secured on the table and will not flex or suddenly “give way” causing danger to operator or the component. Also ensure you have read and understood safety instructions.

### 4. OPERATION

1. Check that the hydraulic unit is fully closed ready for operating.
2. Position the working table at the required operating height by inserting the support pins into the appropriate holes in the main frame.
3. Place the steel block (4) onto the press bed frame (2), then insert workpiece onto the heel block.
4. Position the press plates and/or press tools to be used onto the worktable and align beneath the ram. Place workpiece onto the work table or press plates and align beneath the ram as required. Note: Care must be taken to ensure press plates do not fall from the press work table. If necessary, hold the configuration in position with clamps.
5. Close the long release valve (P25) and short release valve (P31) by turning it clockwise until firmly closed. Use foot pedal (43) or handle (52), let the piston rod down fast, close the long release valve (P25), let the piston rod down slowly. When serrated saddle makes contact and before applying real pressure to the workpiece recheck the alignment with the ram and ensure that the workpiece and press tools are supported in such a way that they cannot flex to breaking point. Then open the short release valve (P31) to change to maximum load pressure.
6. Align workpiece and ram to ensure center-loading.
7. When work is complete and ram is fully retracted, remove workpiece from the press bed frame.

### 5. MAINTENANCE

- Check all fittings are tight before each use.
- Lubricate all moving parts at regular intervals.
- Always keep the press clean, dry, and protected from harsh conditions.
- Should you need to replace the oil ensure the piston is fully retracted. An excess of oil will render the press inoperative.
- Use only appropriate hydraulic jack oil. DO NOT use brake fluid. Contact your local dealer for details.
- Bleed the system to remove any air.

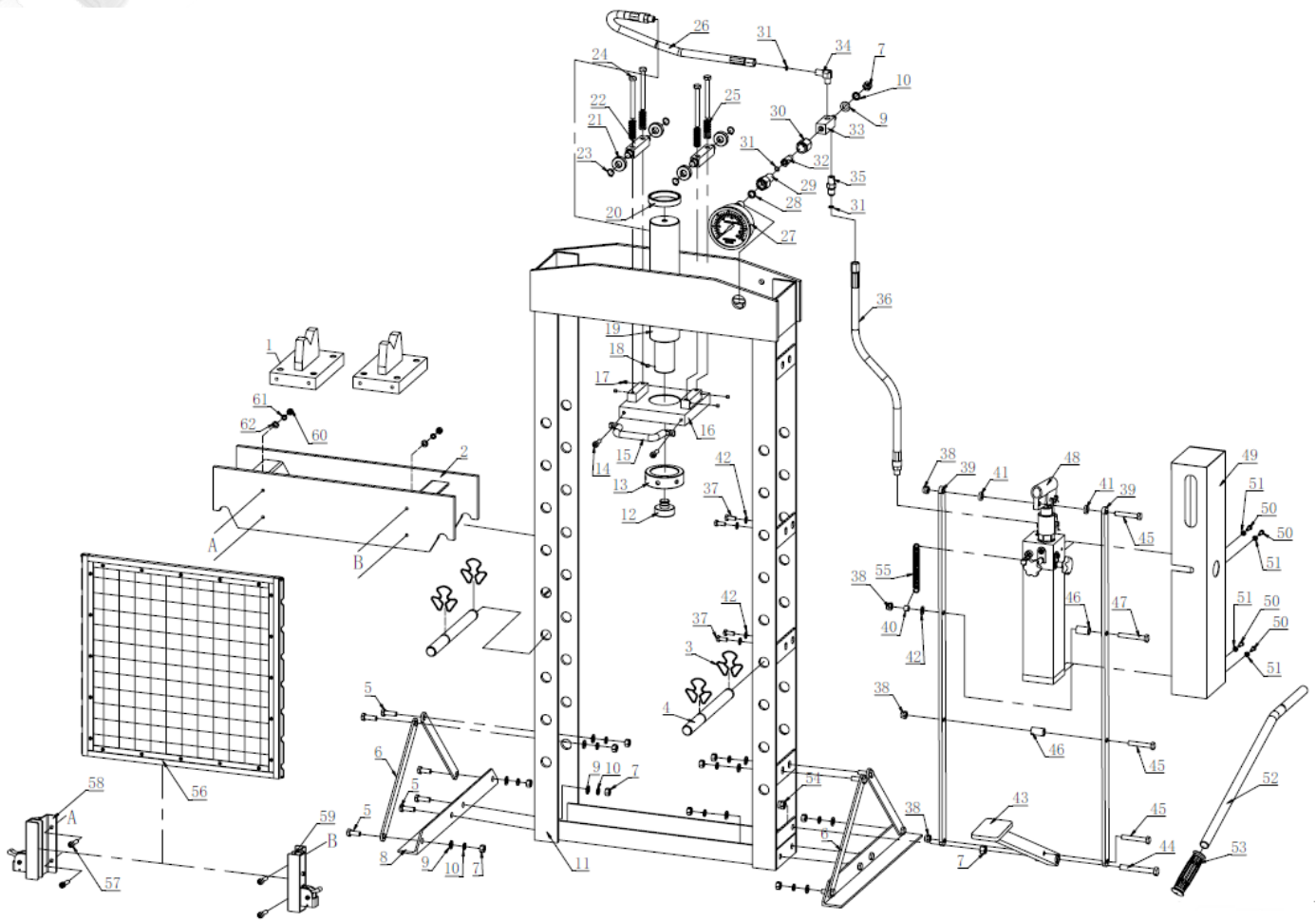
### 6. STORAGE

This Borum Workshop Press should always be stored in a dry location on a level surface with the hydraulic ram in the fully retracted position.

## 7. SERVICE & REPAIR

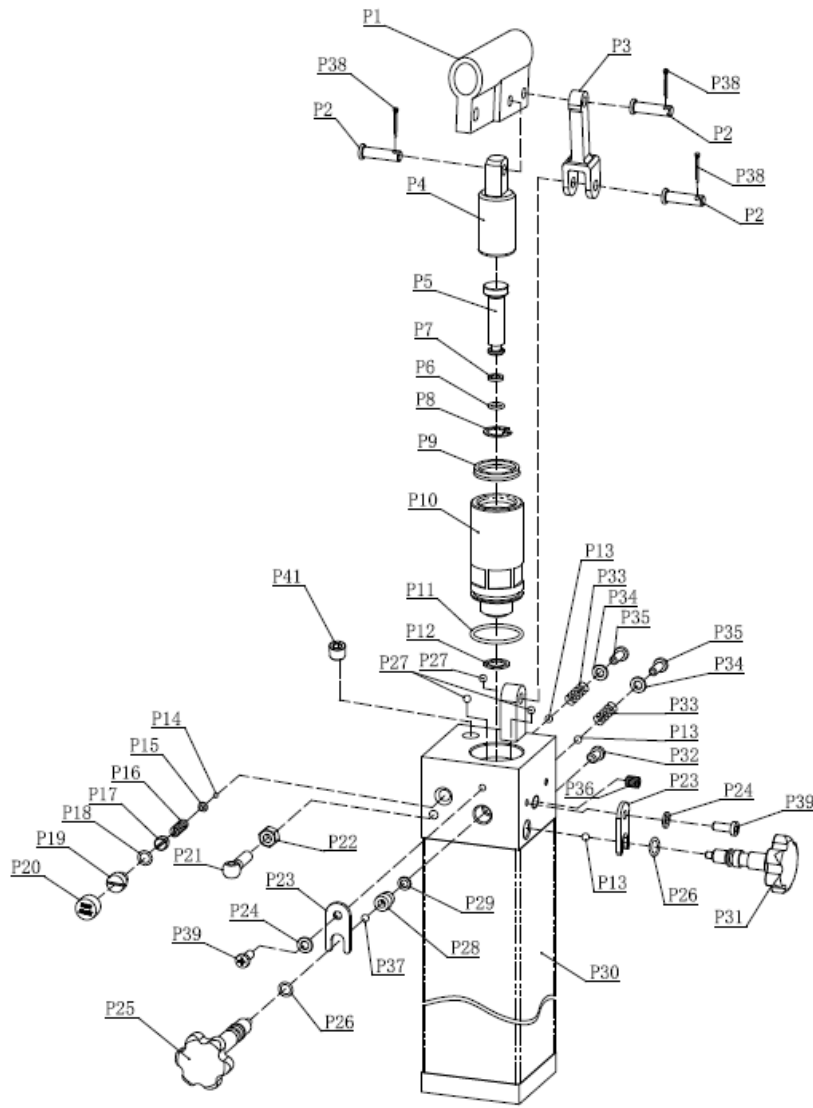
Any Borum Industrial Workshop Press found damaged in any way, or found to be worn or operates abnormally should be removed from service until repaired by an authorised service agent. Owners and / or operators should be aware that repair of this product may require specialised equipment and knowledge. Only authorised parts, labels, decals shall be used on this equipment. Annual inspection of the drill press is recommended and can be made by an authorised repair facility to ensure that your equipment is in optimum condition and that the equipment has the correct decals and safety labels specified by the manufacturer.

## PARTS DIAGRAM & PARTS LIST



Part #	Description	QTY
1	Steel Block Assembly	2
2	Working Table	1
3	Snap Ring	4
4	Pin	2
5	Bolt	12
6	Support Bar	4
7	Nut	14
8	Base Section	2
9	Washer	13
10	Lock Washer	13
11	Frame	1
12	Adaptor	1
13	Nut	1
14	Screw	2
15	Handle	1
16	Mounting Plate	1
17	Screw	4
18	Screw	1
19	Cylinder	1
20	Nut	1
21	Roller	4
22	Square Tube	2
23	Circlip	4
24	Bolt	4
25	Spring	4
26	Hose 2	1
27	Pressure Gauge	1
28	Nylon Washer	1
29	Gauge Fitting	1
30	Nut	1
31	O-ring	3

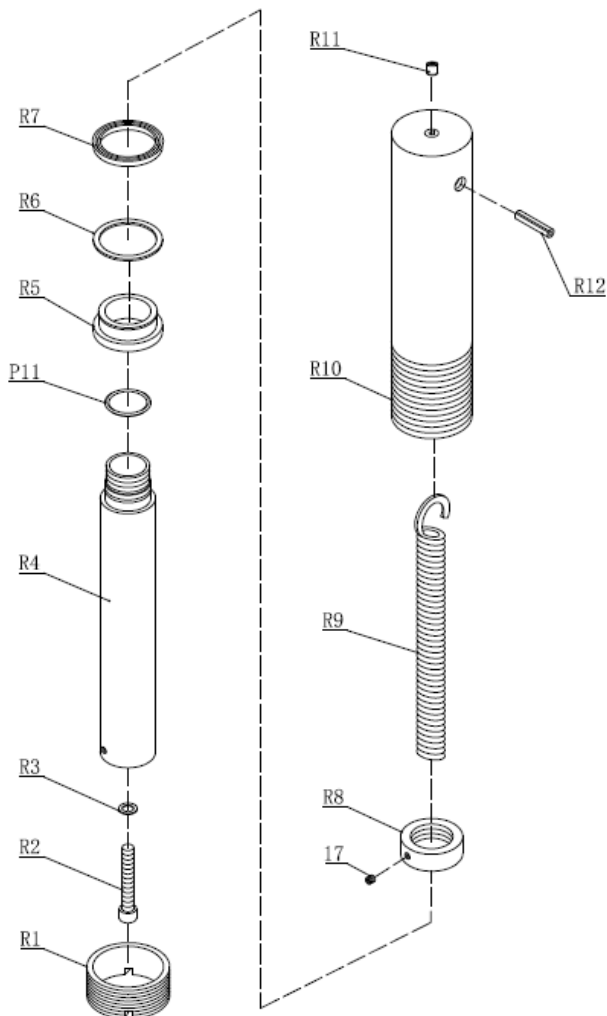
Part #	Description	QTY
32	Screw	1
33	Joint Base	1
34	Elbow	1
35	Joint 1	1
36	Hose 2	1
37	Bolt	4
38	Nut	4
39	Pedal Link	2
40	Bushing	1
41	Support Piece	2
42	Washer	5
43	Foot Pedal Assembly	1
44	Bolt	1
45	Bolt	3
46	Connecting Tube	2
47	Bolt	1
48	Pump	1
49	Protective Cover	1
50	Screw	4
51	Washer	4
52	Handle Tube	1
53	Handle Grip	1
54	Nut	1
55	Spring	1
56	Grid Guard	1
57	Screw	4
58	Bracket (Left)	1
59	Bracket (Right)	1
60	Nut	4
61	Lock Washer	4
62	Washer	1



Part #	Description	QTY
P1	Handle Socket	1
P2	Pin	3
P3	Connecting Rod	1
P4	Big Piston	1
P5	Small Piston	1
P6	O-ring	1
P7	Seal Ring	1
P8	Circlip	1
P9	Seal Ring	1
P10	Piston Seat	1
P11	O-ring	1
P12	Copper Washer	1
P13	Steel Ball	3
P14	Steel Ball	1
P15	Ball Seat	1
P16	Spring	1
P17	Screw	1
P18	O-ring	1
P19	Plug Screw	1
P20	Dust Cap	1
P21	Bolt	1

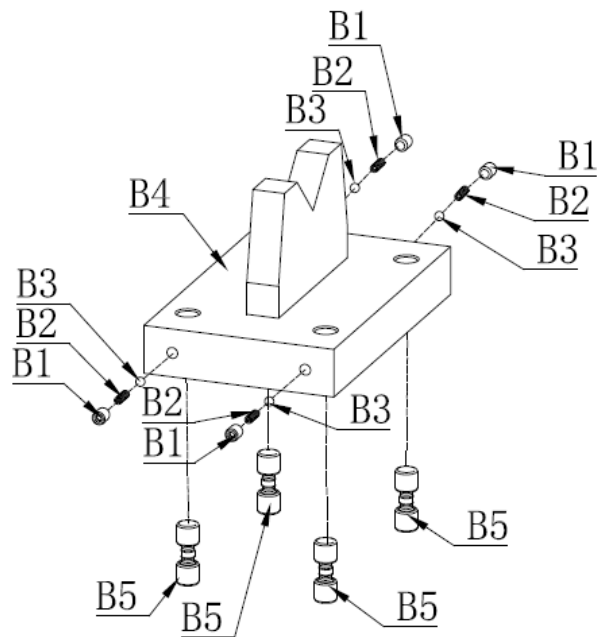
Part #	Description	QTY
P22	Nut	1
P23	U-limit Ring	2
P24	Lock Washer	2
P25	Long Release Valve	1
P26	O-ring	2
P27	Steel Ball	3
P28	Release Valve Seat	1
P29	Copper Washer	1
P30	Pump Assembly	1
P31	Short Release Valve	1
P32	Air Venting Screw	1
P33	Spring	2
P34	Copper Washer	2
P35	Screw	2
P36	Screw	1
P37	Steel Ball	1
P38	Split Pin	3
P39	Screw	2
P40	Seals	1
P41	Screw	1





Part #	Description	QTY
R1	Limit Ring	1
R2	Screw	1
R3	Copper Washer	1
R4	Piston Rod	1
R5	Piston	1
R6	Seal Ring	1
R7	Seal Ring	1
R8	Nut	1
R9	Spring	1
R10	Cylinder	1
R11	Screw	1
R12	Pin	1
R11	O-ring	1
17	Screw	1

Part #	Description	QTY
B1	Screw	4
B2	Spring	4
B3	Steel Ball	4
B4	Steel Block	1
B5	Screw	4



## WARRANTY

BORUM Industrial products have been carefully tested and inspected before shipment and are guaranteed to be free from defective materials and workmanship for a period of 12 months from the date of purchase except where tools are hired out when the guarantee period is ninety days from the date of purchase.

Should this piece of equipment develop any fault, please return the complete tool to your nearest authorised warranty repair agent or contact TQB Brands Pty Ltd Warranty team – [warranty@tqbbrands.com.au](mailto:warranty@tqbbrands.com.au).

If upon inspection it is found that the fault occurring is due to defective materials or workmanship, repairs will be carried out free of charge. This guarantee does not apply to normal wear and tear, nor does it cover any damage caused by misuse, careless or unsafe handling, alterations, accident, or repairs attempted or made by any personnel other than the authorised TQB Brands Pty Ltd repair agent.

This guarantee applies in lieu of any other guarantee expressed or implied and variations of its terms are not authorised.

Your TQB Brands Pty Ltd guarantee is not effective unless you can produce upon request a dated receipt or invoice to verify your proof of purchase within the 12month period.

### Consumer Guarantee

Our goods come with a guarantee that cannot be excluded under the Australian Consumer Law. You are entitled to a replacement or refund for a major failure and compensation for any other reasonably foreseeable loss or damage. You are also entitled to have the goods repaired or replaced if the goods fail to be of acceptable quality and the failure does not amount to a major failure.



All images and illustrations shown are for reference purposes only. All information, specifications and illustrations in this manual are based on the latest information available at the time of publication and are subject to change without notice. The information in this manual is periodically revised to ensure the latest information is included. Download the latest version of this manual and other related technical documentation from [www.tqbbrands.com.au](http://www.tqbbrands.com.au)