

Superior quality since
1984



Owners Manual

AIR HYDRAULIC WORKSHOP PRESS

BORUM

INDUSTRIAL WORKSHOP EQUIPMENT

**INDUSTRIAL
QUALITY**



Specifications

- Safe Working Capacity: 75,000kg
- Working Range: 170-884mm
- Overall Height: 1925mm
- Overall Width: 1146mm
- Overall Depth: 800mm
- Bed Width: 800mm
- Piston Ram Stroke: 260mm
- Bed Height Settings: 8
- Operating Air Pressure: 110-125psi
- Nett Weight: 451kg
- Crate: 2110 x 1100 x 430mm
- Gross Weight: 498kg

About the Borum brand

Our **“heavy duty commercial”** range of **Borum Industrial** equipment has been manufactured to exacting standards for the past **34 years**. We specify industrial quality components and design to ensure a long and durable working life in **commercial transport, mining, earthmoving and railway** environments. Our **Borum Industrial** range of equipment is focused on achieving superior professional standards, reliability, quality, and are covered by a **12month trade use warranty**.

WARNING INFORMATION



IMPORTANT: READ ALL INSTRUCTIONS BEFORE USE

 **WARNING**

The instructions and warnings contained in this manual should be read and understood before using or operating this equipment. Do not allow anyone to use or operate this equipment until they have read this manual and have developed a thorough understanding of how this equipment works. Failure to observe any of the instructions contained in the manual could result in severe personal injury to the user or bystanders, or cause damage to the equipment and property. Keep this manual in a convenient and safe place for future reference.

The warnings, cautions and instructions discussed in this instruction manual cannot cover all possible conditions and situations that may occur. It must be understood by the operator that common sense and caution are factors which cannot be built into this product, but must be supplied by the operator.

Whilst every effort has been made to ensure accuracy of information contained in this manual, the Borum policy of continuous improvement determines the right to make modifications without prior warning.

CONTENTS

WARNING INFORMATION	1
STANDARD OPERATING PROCEDURE	2
ASSEMBLY, OPERATION, PREVENTITIVE MAINTENANCE	3
TROUBLESHOOTING	7
PARTS DIAGRAM & PARTS LIST	8
WARRANTY.....	9

STANDARD OPERATING PROCEDURE

DO NOT use this machine unless you have been trained and assessed to a competent level in its safe use and operation, and have been given permission to use this



Safety glasses must be worn when operating this equipment



Safety footwear must be worn when operating this equipment



Safety gloves must be worn when operating this equipment



Long loose hair must be contained when operating this equipment



Close fitting/protective clothing must be worn when operating this equipment



Hearing protection must be worn where noise levels are in excess of 85 dB(A) occupational exposure limit

PRE-OPERATIONAL SAFETY CHECKS

1. The maximum load is 75,000kg. DO NOT exceed this rated capacity. Never apply excessive force to a workpiece and always use the pressure gauge to accurately determine the applied load. Burst hazard exists if hose or connection pressure exceeds rated pressure.
2. Borum Workshop Presses are designed for automotive, truck, implement, fleet, and industrial repair shops where pressing, bending, straightening, forming, holding is required. Each press includes a cylinder, a pump, and lifting bar which provides a safe way to raise and lower the bed frame, and a pressure gauge which provides for monitoring the applied press force.
3. Keep children and unauthorised persons away from the work area.
4. Do not operate this Borum Workshop Press whilst wearing loose clothing. Remove ties, watches, rings and other loose jewellery, and contain long hair in a suitable hair net.
5. Wear approved impact safety goggles, full-face impact safety shield and heavy-duty work gloves when operating this Borum Workshop Press.
6. Keep proper balance and footing, do not overreach and wear non-skid footwear.
7. Inspect this Borum Workshop Press before each use. Do not use if bent, broken, cracked, leaking or otherwise damaged, any suspect parts are noted or it has been subjected to a shock load.
8. Check to ensure that all applicable bolts and nuts are firmly tightened.
9. Keep hands and feet away from the bed area at all times.
10. Do not use this Borum Workshop Press to compress springs or any other item that could disengage and cause a potential hazard. Never stand directly in front of loaded press and never leave loaded press unattended.
11. Do not operate this Borum Workshop Press when you are tired or under the influence of alcohol, drugs or any intoxicating medication.
12. Do not expose this Borum Workshop Press to rain or any other kind of bad weather
13. Do not allow untrained persons to operate this Borum Workshop Press.
14. Do not make any modifications to this Borum Workshop Press.
15. Do not use brake fluid or any other improper fluid and avoid mixing different types of oil when adding hydraulic oil. Only good quality hydraulic jack oil can be used.
16. If this Borum Workshop Press needs repairing and/or there are any parts that need to be replaced, have it repaired by an authorised technicians and only use the replacement parts supplied by the manufacturer.
17. Always ensure the operator has read an onsite risk assessment.
18. Check workspace and walkways to ensure no slip-hazards are present. Provide a 1 metre clearance around this equipment.
19. Faulty equipment must not be used. Immediately report suspect equipment.

OPERATIONAL SAFETY CHECKS

1. Use a qualified person to maintain the press in good condition. Keep it clean for best and safest performance.
2. Only use this Borum Workshop Press on a surface that is stable, level, dry and not slippery, and capable of sustaining the load. Keep the surface clean, tidy and free from unrelated materials and ensure that there is adequate lighting.
3. Ensure that workpiece is centre-loaded and secure.
4. Use a safe working posture (beware of hair catching).

ASSEMBLY, OPERATION, PREVENTITIVE MAINTENANCE

1. FEATURES & MODELS

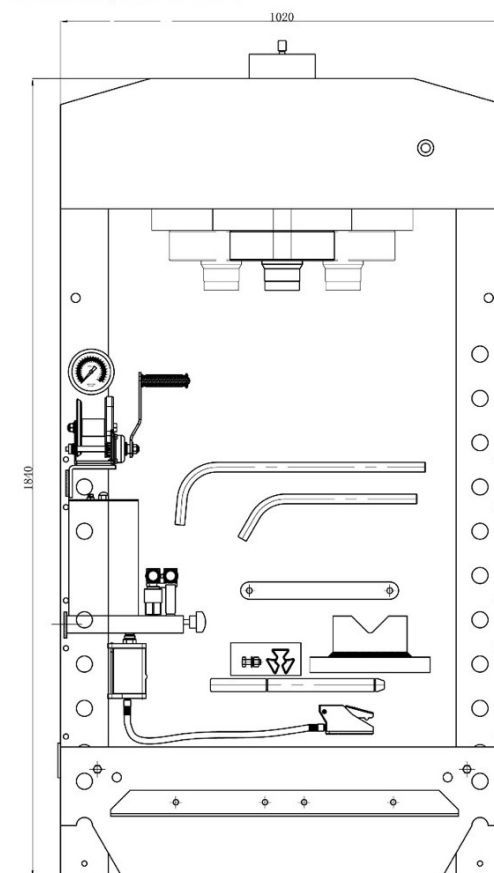
This "Borum Industrial" 75,000kg Air Hydraulic Workshop Press is designed for automotive, truck, implement, fleet, and industrial repair shops where pressing, bending, straightening, forming, holding work requires high pressure hydraulics. Polished inner cylinder walls extend the life of the hydraulic seals to minimize abrasion and wear, while the cylinder ram and pistons are also polished and chromed, guided by high performance seals, wear rings and dust seals. Includes a dial gauge for dual metric/tons pressure readings.

"Borum Industrial" Air Hydraulic Workshop Presses are available in a variety of capacities and sizes. The press frames are designed for maximum strength, reliability and durability. The strong frames and powerful high-pressure hydraulics will provide years of dependable service in many applications. When components need to be removed or assembled, "Borum Industrial" hydraulic presses deliver the controlled power to safely remove and install bearings, gears, U-joints, bushings, ball joints and pulleys with precision and versatility!

2. UNPACKING

Use a fork lift to take the press out of case.

1. Double check parts to ensure they are all there. The parts should include press body frame, pump, base, support, hardware kits, etc.
2. Packaging Case internal view.



3. ASSEMBLY

The bed frame (31) is put in the bottom in order to convenient for package and transport, then fixed on the post by two bolts M12.

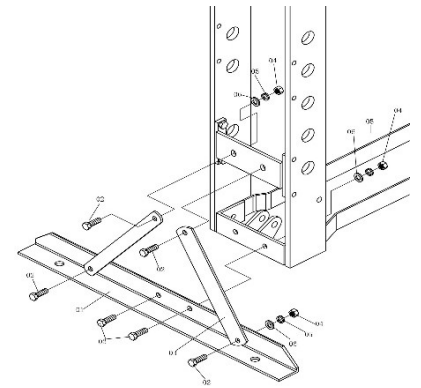


Figure 1

Attach the base section (01) and support (03) to left and right connecting plate using bolt (02), washer (06), lock washer (05) and nut (04).

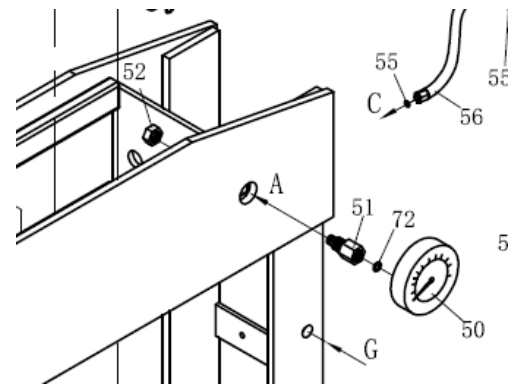


Figure 2

Assemble the nylon ring (72) to gauge fitting (51), then put the pressure gauge (50) and twist tight. Remark: twist as tight as possible, otherwise it will be leak.

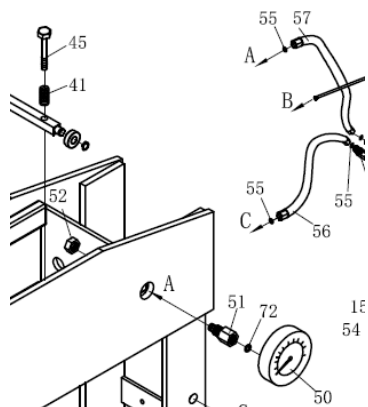
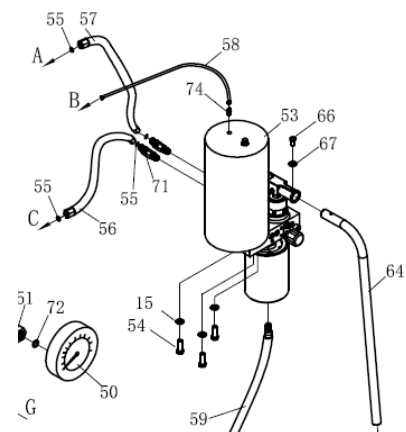


Figure 3: Assembly 1



Assembly 2

Oil hose 1 assemble:

Dismantle the plug from oil hose 1 (56) then assemble the O-ring (55), also dismantle the plug from ram assembly (46), connect the oil hose 1 (56) to ram assembly (46) and twist tight.

Oil hose 2 assemble:

Attach the O-ring (55) to gauge fitting (51), then put the oil hose 2(57) into the gauge fitting (51) and twist tight, connect the PU hose (58). Attach the handle (64) to the pump pin by using bolt (66) and flat washer (67) and twist tight.

Move the hand winch (12) to the outside of the post, then use bolt (02), washer (06), lock washer (05), and nut (04) which were dismantled just now to twist tight and fix to the relevant roller.

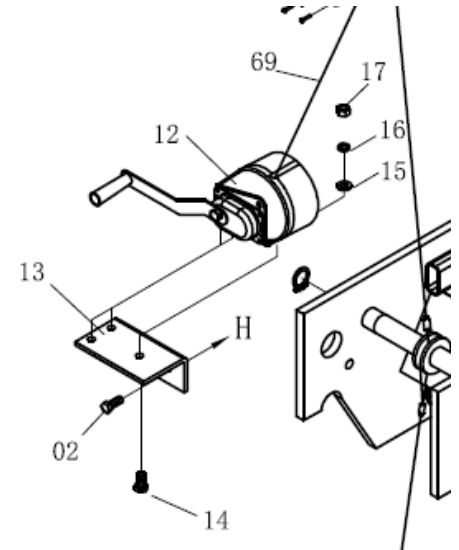
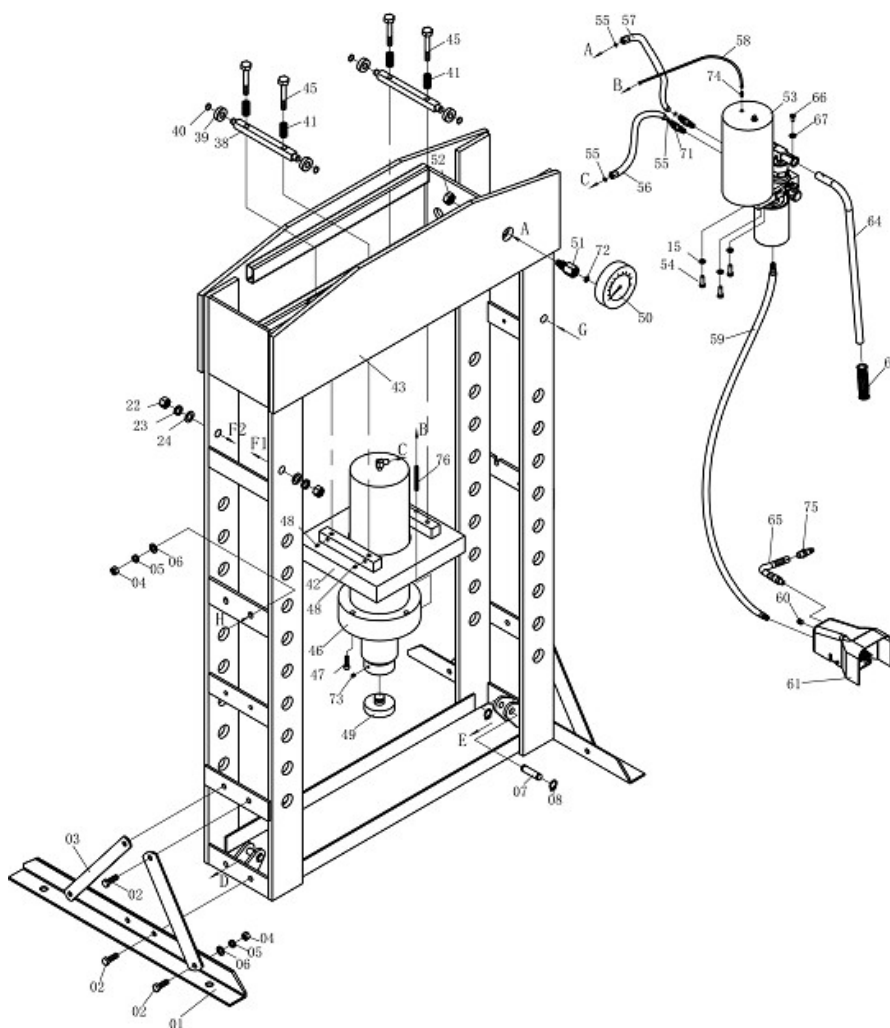


Figure 4



4. BEFORE USE

- Prior to each use conduct a visual inspection checking for abnormal conditions, such as cracked welds, leaks, and damaged, loose, or missing parts.
- Before the first use, please fix the base to the floor by anchor bolt. It must be ensured that the standing surface of the machine site is firm and horizontal, and that sufficient lighting is provided for.
- Clean the machine thoroughly
- Before first use of this product, pour a teaspoon of good quality, air tool lubricant into the air supply inlet of the lift control valve, connect to air supply to air supply and operate for 3 seconds to evenly distribute lubricant.
- Bleed away air from the hydraulic system.

Manual operation system:

- Open the release valve (50) by turning it counter-clockwise. Pump several full strokes to eliminate any air in the system.

Air operating system:

- Open the release valve (50) by turning it counter-clockwise. Connect the quick coupler-male into the air supply hose quick coupler-female, then turn on the air valve(52) letting the pump work for several times to eliminate any air in the system.
- Check all parts and conditions, if there is any part broken, stop using it and contact your supplier immediately.

5. OPERATION

- Ensure bed frame at proper position and lock the bed frame by pins (12) firmly.
- Place the heel block (24) on bed frame (23), then insert workpiece onto the heel block.
- Note: The steel block must be used by pair, not by piece!
- The steel block can be used by both sides.
- Close the release valve (50) by turning it clockwise until it is firmly closed.
- Connect the quick air valve (52) into the junction of air source, turn on the air valve (52) to let the pump work until serrated saddle (40) nears workpiece, then turn off the air valve. When air source is unavailable, pump the handle (49) until serrated saddle (40) nears workpiece.
- Align workpiece and ram to ensure centre loading.
- Turn on air valve (or pump handle) to apply load onto workpiece (check applied pressure in pressure gauge).
- when work is done, turn off the air valve (or stop pumping handle), slowly and carefully remove load from workpiece by turning the release valve(50) counter-clockwise in small increments.(must turn with the small angle, the biggest is two circles)
- Once ram has fully retracted, remove workpiece from bed frame.
- Disconnect the air inlet fitting from the air source.

6. MAINTENANCE

- Maintenance should be carried out on a daily basis for a press working **every day**.
- Clean the outside of the press with dry, clean and soft cloth and periodically lubricate the hoist, wheel shaft assembly, the joints and all moving parts with a light oil in normal service.
- DO NOT allow lubricant to spill onto the heel blocks or frame of the workshop press.
- When not in use, store this Borum Workshop Press in a dry location with ram and piston fully retracted.
- When press efficiency drops, purge away air from the hydraulic system as described before.
- Check the hydraulic oil: remove the oil filler nut (49) on the top of the reservoir, if the oil is not adequate, fill with 22#(ISO6743) hydraulic jack oil as necessary, then replace the oil filler nut, purge away air from the hydraulic system as described before.
- This equipment should not be repaired or modified without approval from a certified technical support engineer.

7. INSPECTION

- Prior to each use conduct a visual inspection checking for abnormal conditions, such as cracked welds, leaks, and damaged, loose, or missing parts.
- Owners and /or operators should be aware that repair of this product may require specialised equipment and knowledge (refer to maintenance section).

8. STORAGE

This Borum Workshop Press should always be stored in a dry location on a level surface with the power switched off.

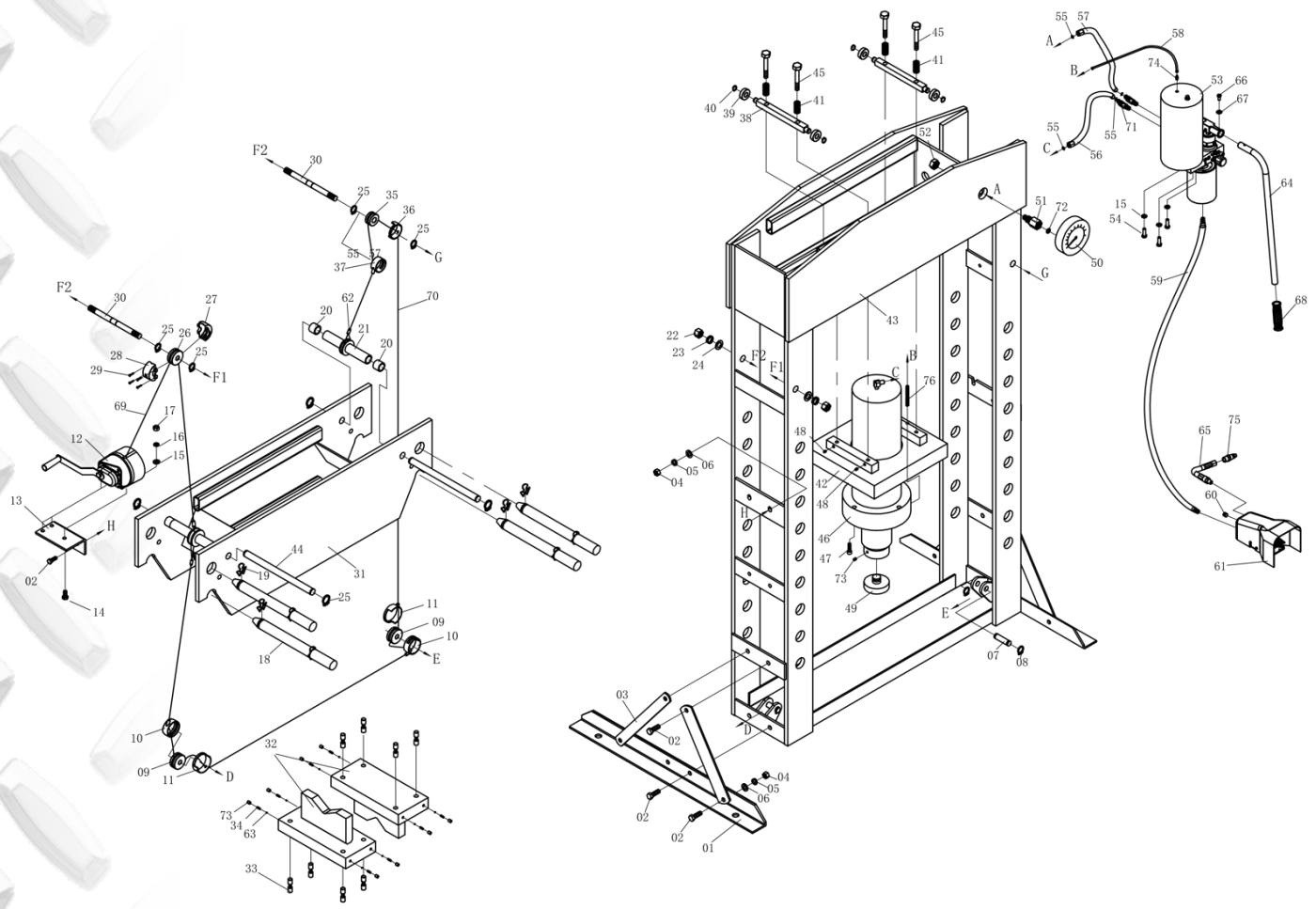
9. SERVICE & REPAIR

Any Borum Industrial Workshop Press found damaged in any way, or found to be worn or operates abnormally should be removed from service until repaired by an authorised service agent. Owners and / or operators should be aware that repair of this product may require specialised equipment and knowledge. Only authorised parts, labels, decals shall be used on this equipment. Annual inspection of the drill press is recommended and can be made by an authorised repair facility to ensure that your equipment is in optimum condition and that the equipment has the correct decals and safety labels specified by the manufacturer.

TROUBLESHOOTING

RAM WILL NOT PRESS LOAD	RAM BLEEDS OFF AFTER PRESS OPERATION	RAM WILL NOT RETRACT AFTER UNLOADING	POOR LIFT PERFORMANCE	RAM WILL NOT EXTEND TO FULL EXTENSION	CAUSES AND SOLUTIONS
X	X		X		Release valve not tightly closed Ensure release valve tightly closed
X					Overload condition Remedy overload condition
X	X		X		Power unit malfunctioning Replace the power unit
		X	X		Reservoir overfilled Remove pump, then drain fluid to proper level
		X			Linkage binding Clean and lubricate moving parts
X				X	Fluid level low Ensure proper fluid level
X			X	X	Air trapped in system Purge air from system

PARTS DIAGRAM & PARTS LIST

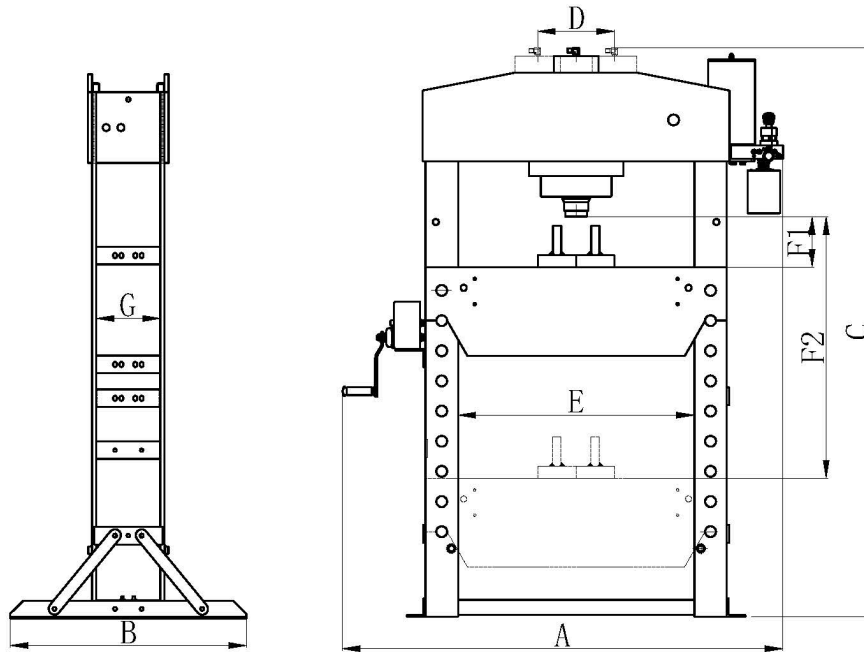


Part	Description	QTY
1	Base	2
2	Bolt	14
3	Support Bar	4
4	Nut	14
5	Lock Washer	14
6	Flat Washer	14
7	Roller Pin 2	2
8	Circlip	4
9	Big Roller	2
10	Cover 1	2
11	Cover 2	2
12	Hand Winch	1
13	Plate	1
14	Bolt	3
15	Flat Washer	6
16	Lock Washer	3
17	Nut	3
18	Pin	4
19	Circlip	8
20	Tube	4
21	Bushing	2
22	Nut	4
23	Lock Washer	4
24	Flat Washer	4
25	Circlip	8
26	Roller 3	1

Part	Description	QTY
27	Cover	1
28	Cover	1
29	Screw	4
30	Roller Pin	2
31	Working Bed	1
32	Steel Block	2
33	Screw	8
34	Spring	8
35	Small Roller	1
36	Cover 3	1
37	Cover 4	1
38	Tube	2
39	Roller	4
40	Circlip	4
41	Spring	4
42	Mounting Plate	1
43	Frame	1
44	Lifting Bar	2
45	Bolt	4
46	Ram Assembly	1
47	Screw	4
48	Screw	4
49	Saddle	1
50	Pressure Gauge	1
51	Gauge Fitting	1
52	Nut	1

Part	Description	QTY
53	Pump Assembly	1
54	Bolt	5
55	O Ring	4
56	Oil Hose	1
57	Oil Hose	1
58	PU Hose	1
59	Air Hose	1
60	Plug	1
61	Air Valve	1
62	Cable Sleeve	3
63	Steel Ball	8
64	Handle	1
65	Air Hose	1
66	Bolt	1
67	Flat Washer	1
68	Handle Sleeve	1
69	Cable	1
70	Cable	1
71	Fitting	2
72	Nylon Ring	1
73	Screw	9
74	Hose Fitting	1
75	Fitting	1
76	Spring	1

PARTS DIAGRAM DRAWING



Model	Capacity	Ram Travel mm	A mm	B mm	C mm	D mm	F1-F2 mm	E mm	G mm
BSP75TA	75T	250	1400	800	1925	260	170-884	800	217

WARRANTY

BORUM Industrial products have been carefully tested and inspected before shipment and are guaranteed to be free from defective materials and workmanship for a period of 12 months from the date of purchase except where tools are hired out when the guarantee period is ninety days from the date of purchase.

Should this piece of equipment develop any fault, please return the complete tool to your nearest authorised warranty repair agent or contact TQB Brands Pty Ltd Warranty team – warranty@tqbbrands.com.au.

If upon inspection it is found that the fault occurring is due to defective materials or workmanship, repairs will be carried out free of charge. This guarantee does not apply to normal wear and tear, nor does it cover any damage caused by misuse, careless or unsafe handling, alterations, accident, or repairs attempted or made by any personnel other than the authorised TQB Brands Pty Ltd repair agent.

This guarantee applies in lieu of any other guarantee expressed or implied and variations of its terms are not authorised.

Your TQB Brands Pty Ltd guarantee is not effective unless you can produce upon request a dated receipt or invoice to verify your proof of purchase within the 12month period.

Consumer Guarantee

Our goods come with a guarantee that cannot be excluded under the Australian Consumer Law. You are entitled to a replacement or refund for a major failure and compensation for any other reasonably foreseeable loss or damage. You are also entitled to have the goods repaired or replaced if the goods fail to be of acceptable quality and the failure does not amount to a major failure.



All images and illustrations shown are for reference purposes only. All information, specifications and illustrations in this manual are based on the latest information available at the time of publication and are subject to change without notice. The information in this manual is periodically revised to ensure the latest information is included. Download the latest version of this manual and other related technical documentation from www.tqbbrands.com.au